

Annington Gardens

Shoreham-By-Sea





We know just the place...



This wonderful four bedroom family home with off-street parking has been recently refurbished and offers the perfect space for family living. It is located in a quiet cul-de-sac in Annington Gardens in a popular residential area of Shoreham.

The hallway accesses a ground floor bedroom with en-suite shower room. This makes an ideal ground floor bedroom or a quiet space for anyone who requires a home office.

The ground floor living space is dual aspect running from the front to the rear of the house offering an open plan living space.

Recently installed, the kitchen has beautiful Minerva worktops and breakfast bar area. The conservatory is currently being used as a dining room and looks out to the rear garden which has also been very recently landscaped.

On the first floor there are three good size bedrooms, the master is of a generous size, with the other two rooms suitable for double beds. The family bathroom has also been recently renovated to a high standard.

Annington Gardens is located within close walking distance to Buckingham Park, the South Downs national park. Shoreham train station (with direct trains to Brighton and London) is also easily reached on foot as is Shoreham Town Centre with it's range of shopping, cafes, bars and restaurants.

Viewing is highly recommended to avoid disappointment.



4



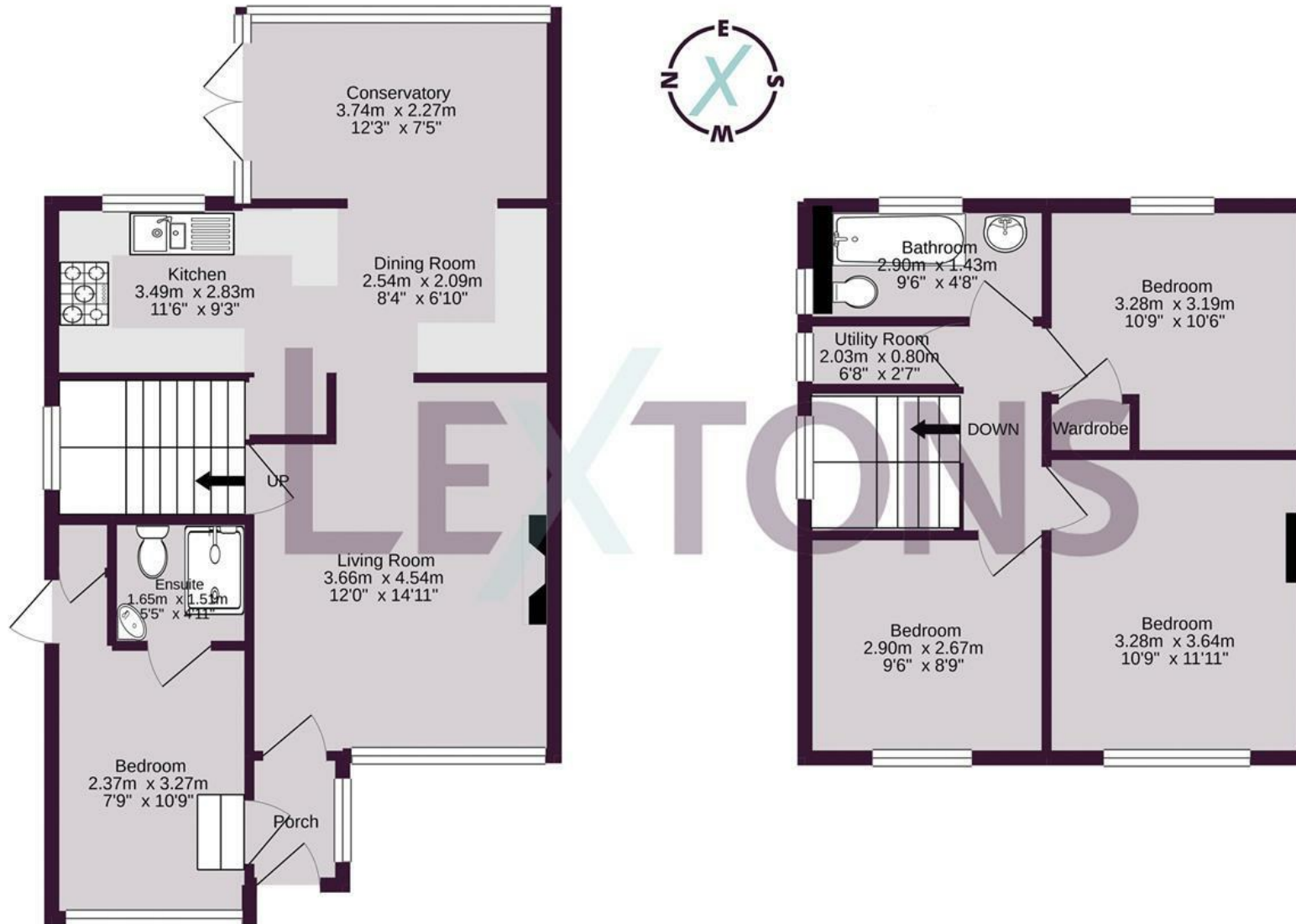
2



2



E



Meet us here...
174 Church Road
Hove
BN3 2DJ

We aim to make our particulars both accurate and reliable. However they are not guaranteed; nor do they form part of an offer or contract. If you require clarification on any points then please contact us, especially if you're traveling some distance to view. Please note that appliances and heating systems have not been tested and therefore no warranties can be given as to their good working order.