

Palmeira Square

Hove

LEXTONS /
SALES
LETTINGS
AUCTIONS
COMMERCIAL



Palmeira Square Hove



2

BEDROOM

1

RECEPTION

1

BATHROOM

About the property

GUIDE PRICE £575,000 - £600,000

Nestled in the heart of the historic and highly sought-after Palmeira Square in Hove, this exceptional two-bedroom apartment is a true gem within a delightful regency building. As you step inside, you are greeted by a spacious lobby that sets the tone for the rest of the property.

The abundance of natural light that floods the apartment accentuates the generous space it offers. The layout is both practical and versatile, with all rooms branching off from a central landing. A standout feature is the expansive walk-in wardrobe, providing not only ample storage but also the potential to be transformed into a home office or an additional bedroom.

The living room, located at the front of the property, boasts stunning views overlooking the picturesque gardens of Palmeira Square and St John's Church. With a feature fireplace and beautiful engineered oak flooring, this room is perfect for entertaining or simply unwinding with a glass of wine as you watch the sunset.

The second bedroom is equally impressive, offering a generous space that can accommodate a desk, along with a period feature fireplace. The elegant fully tiled family bathroom is conveniently located across the hallway and features a full-sized bath, shower, heated towel rail, and well-placed recessed shelving for storage.

The modern fitted kitchen with a feature wood slatted wall is a chef's delight, equipped with white units, Corian worktops, and high-end appliances. A separate utility room houses the washing machine and provides additional storage space.

The main bedroom is a sanctuary of luxury, featuring New Zealand wool carpets, west-facing windows offering sunrise views, and glimpses of the city skyline and partial sea views.

This property has been meticulously refurbished to the highest standards in 2023, ensuring a contemporary and stylish living space. The building's exterior has just been extensively refurbished and redecorated.

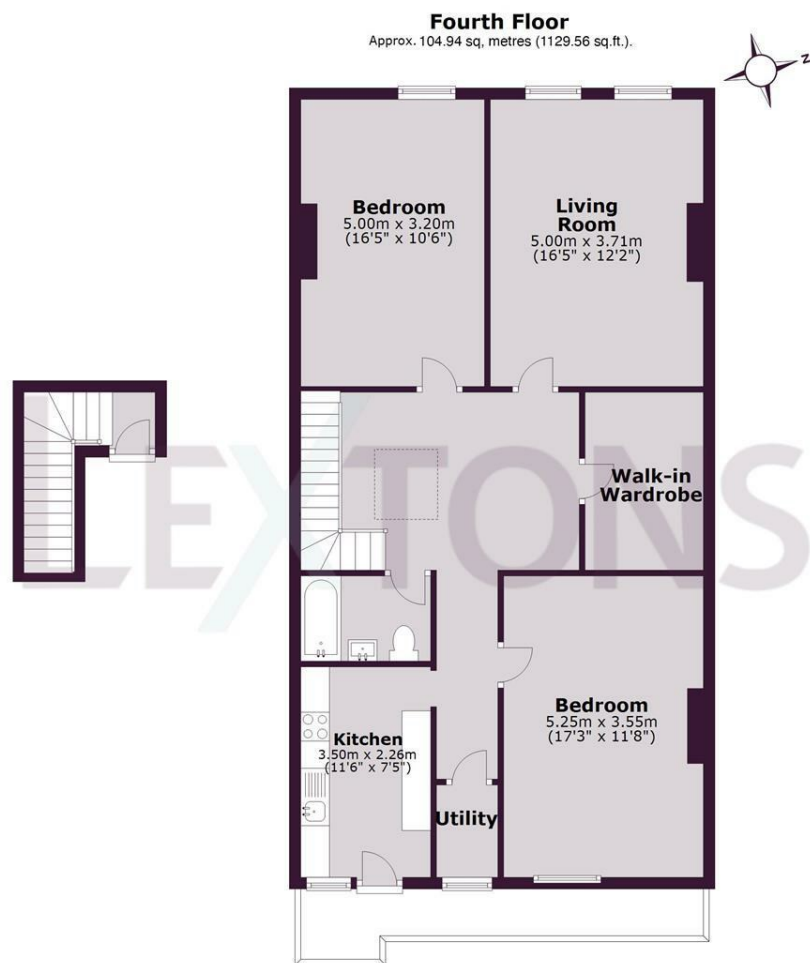








SCAN HERE TO OFFER ON THIS PROPERTY



Total area: approx. 104.94 sq. metres (1129.56 sq.ft.).

Energy Efficiency Rating		
	Current	Potential
Very energy efficient - lower running costs		
(92 plus) A		
(81-91) B		
(69-80) C		80
(55-68) D	57	
(39-54) E		
(21-38) F		
(1-20) G		
Not energy efficient - higher running costs		
England & Wales		EU Directive 2002/91/EC