

Church Road

Hove



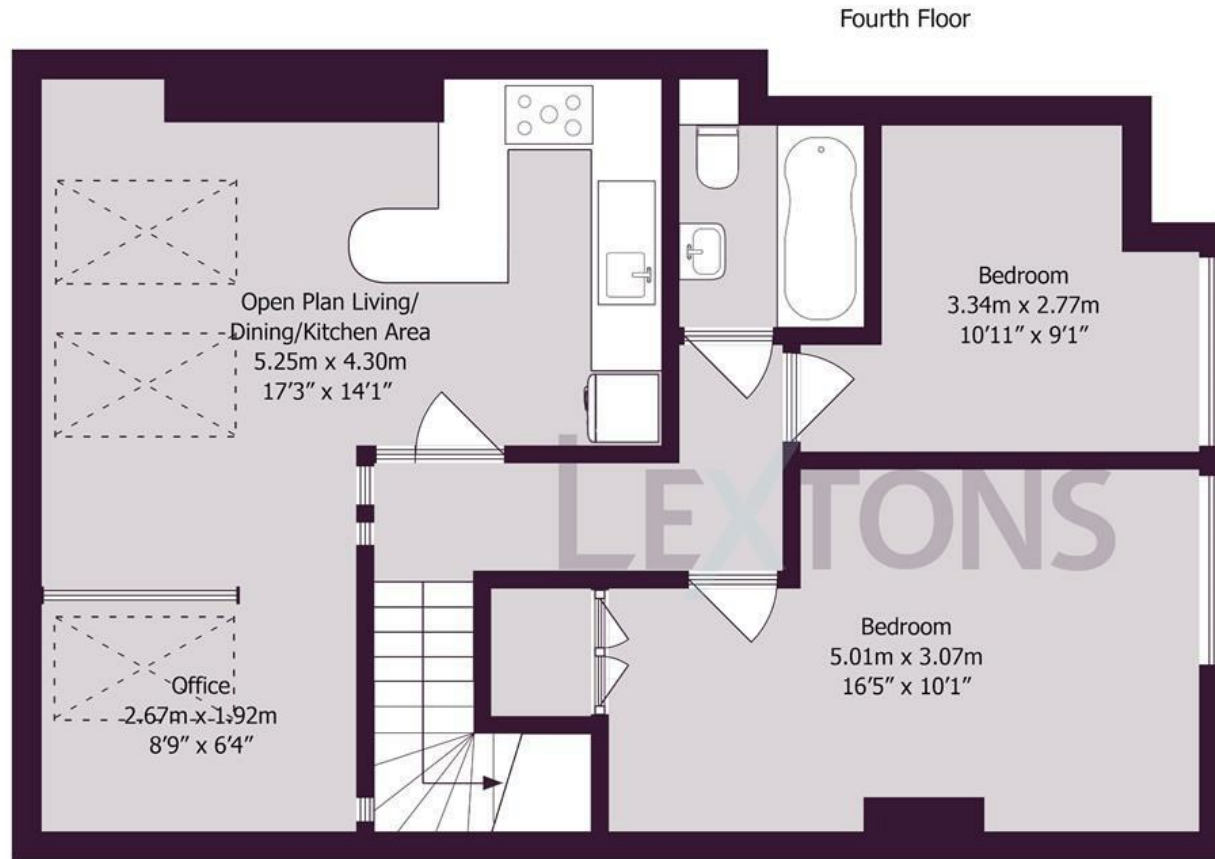


We know just the place...

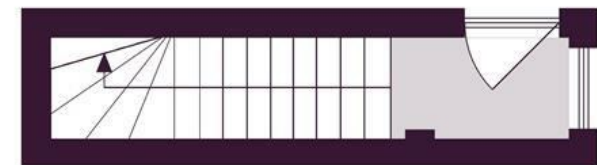


With beautiful vistas that stretch out across the greenery and grandeur of Palmeira Square and down to the sea, this exceptional double aspect apartment offers a beautiful light enhancing clean line design scheme within the grace and elegance of a Grade II listed landmark building. Tastefully chosen interior design themes feature throughout a hugely fluid layout that's cleverly delineated to include a superb open plan living/dining/kitchen area and an excellent office. Its enviable location generates a superb quality of life with a wealth of cafes, restaurants and shops only moments away and the beach and seafront just a short stroll from your door.





Entrance on
Third Floor



Approximate gross internal floor area 65 sq m/ 700 sq ft

Whilst every care has been taken to ensure accuracy, dimensions are approximate and for illustrative purposes only.

Created by Property Photography UK for Lextons. All rights reserved.

Meet us here...
174 Church Road
Hove
BN3 2DJ

We aim to make our particulars both accurate and reliable. However they are not guaranteed; nor do they form part of an offer or contract. If you require clarification on any points then please contact us, especially if you're traveling some distance to view. Please note that appliances and heating systems have not been tested and therefore no warranties can be given as to their good working order.