



TK International  
020 7794 8700  
www.t-k.co.uk

Residential Sales  
Residential Lettings  
Property Management

Sales Office:  
9 Heath Street  
Hampstead  
London NW3 6TP  
E: sales@t-k.co.uk

Lettings Office:  
16-18 Heath Street  
Hampstead  
London NW3 6TE  
E: lettings@t-k.co.uk

Instagram: tk.international  
Twitter: @tk\_int  
LinkedIn: TK International  
Facebook: TK International



## **Westholm**

### **Hampstead Garden Suburb**

### **NW11**

A beautiful three bedroom period cottage with an ultra-modern interior inside this property you will find all the benefits of modern living combined with the feel of a period cottage on a quiet leafy street.

The property underwent a complete renovation two years ago adding features like, underfloor heating throughout that allows you to control each room individually, a very modern kitchen with induction hobs and a combined oven, grill and microwave.

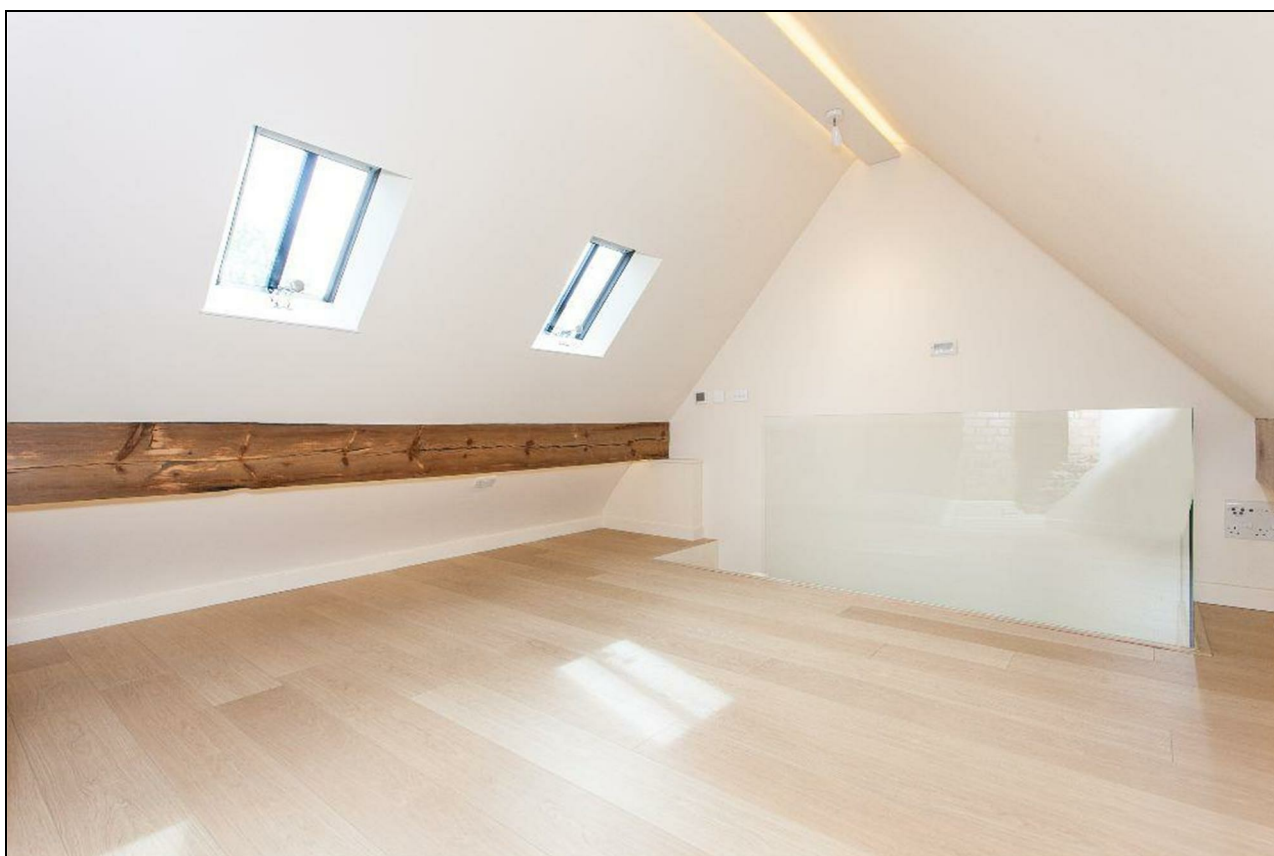
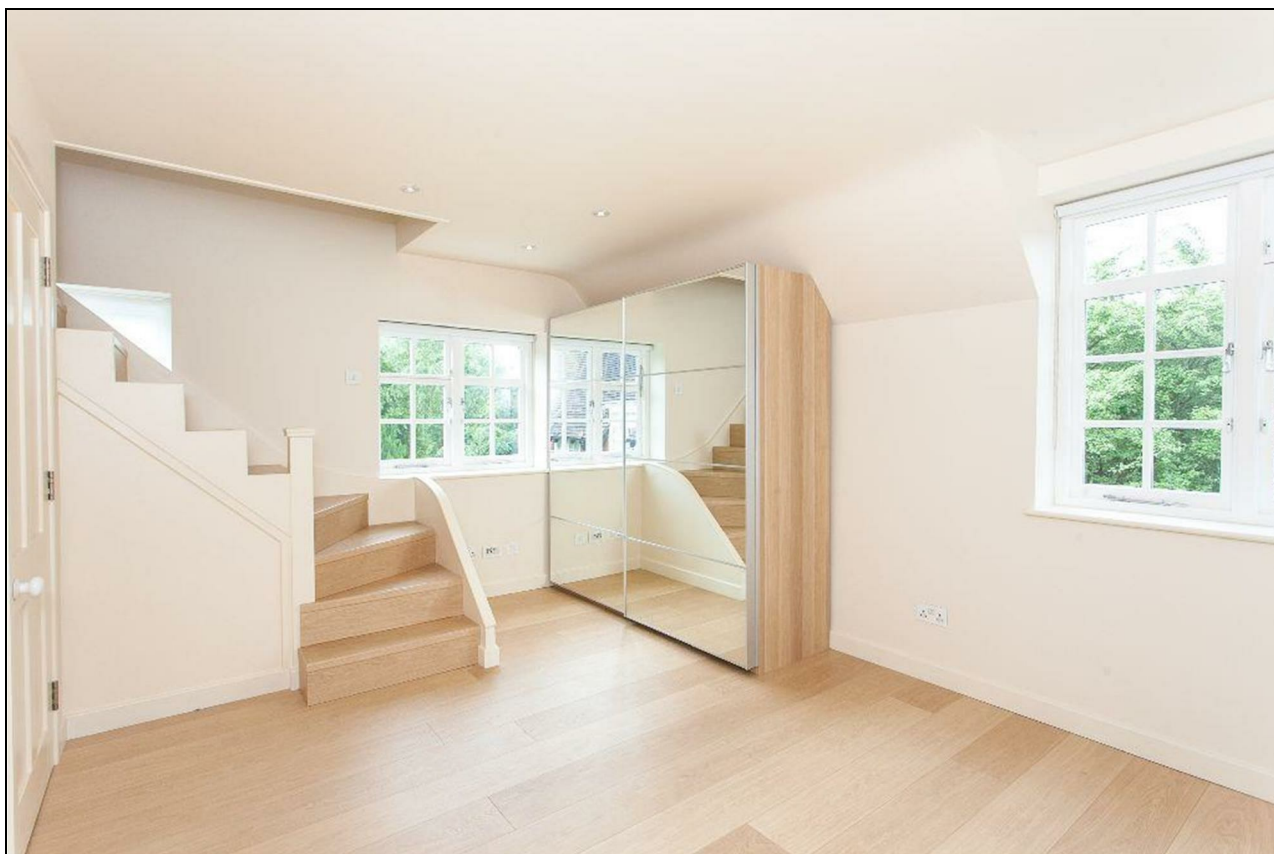
Upstairs you will find two very good size bedrooms with a further multipurpose room in the attic, that would be perfect for an office, play room or guest bedroom.

EPC Rating: D

**£650 Per Week**







# Hampstead Way, NW11

Approx. Gross Internal Area 1106 Sq Ft - 102.75 Sq M



Ground Floor



First Floor

For Illustration Purposes Only - Not To Scale

This floor plan should be used as a general outline for guidance only and does not constitute in whole or in part an offer or contract. Any intending purchaser or lessee should satisfy themselves by inspection, searches, enquiries and full survey as to the correctness of each statement. Any areas, measurements or distances quoted are approximate and should not be used to value a property or be the basis of any sale or let.