



TK International
020 7794 8700
www.t-k.co.uk

Residential Sales
Residential Lettings
Property Management

Sales Office:
9 Heath Street
Hampstead
London NW3 6TP
E: sales@t-k.co.uk

Lettings Office:
16-18 Heath Street
Hampstead
London NW3 6TE
E: lettings@t-k.co.uk

tk.international
@tk_int
TK International
TK International

Est.
1998



Priory Terrace West Hampstead NW6

An exceptionally well presented, semi detached, four bedroom Victorian villa, situated in this sought after road of West Hampstead just off Abbey Road.

This desirable family home retains an abundance of charm and character which includes detailed cornicing, window shutters and attractive fireplaces to name a few. The current owners have extended the house to provide flexible accommodation arranged over four floors.

The raised ground floor has two intercommunicating reception rooms and kitchen, the first floor is occupied by the well appointed master bedroom and dressing room with adjacent bathroom. Two further bedrooms, both with galleried mezzanines, are on the second floor with an additional bathroom and utility room.

The garden level offers a fourth bedroom and shower room, kitchen/utility room and a large comfortable reception/family room with double doors leading to the west facing rear garden.

The house is further enhanced by a delightful landscaped west facing garden and the extensive shopping facilities and transport links of South Hampstead and West Hampstead (Jubilee) are within close proximity.

NB The Vendor has advised us that they once had planning permission to extend the garden level.

£2,850,000

SOLE AGENT

Freehold



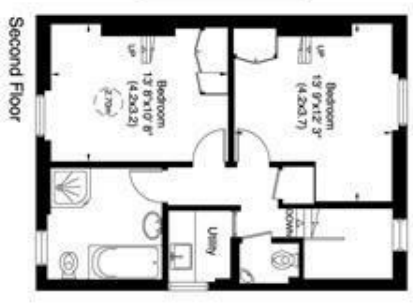
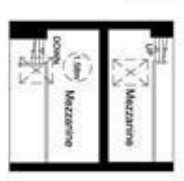
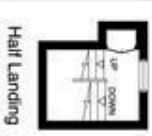
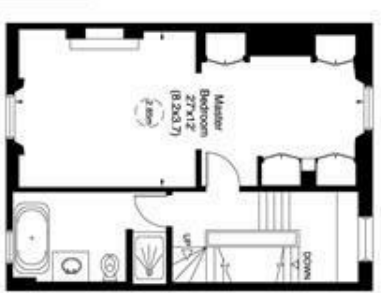
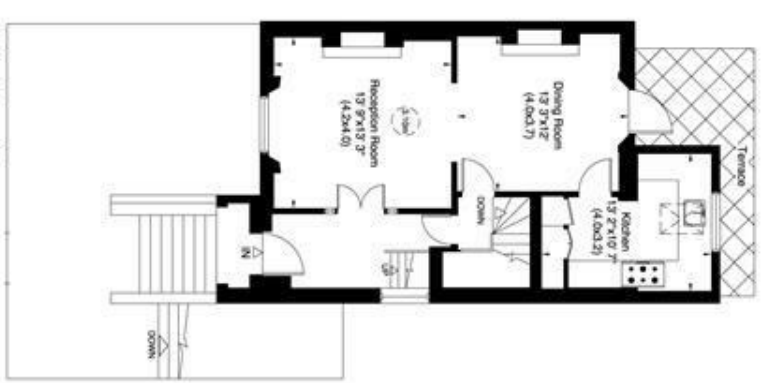
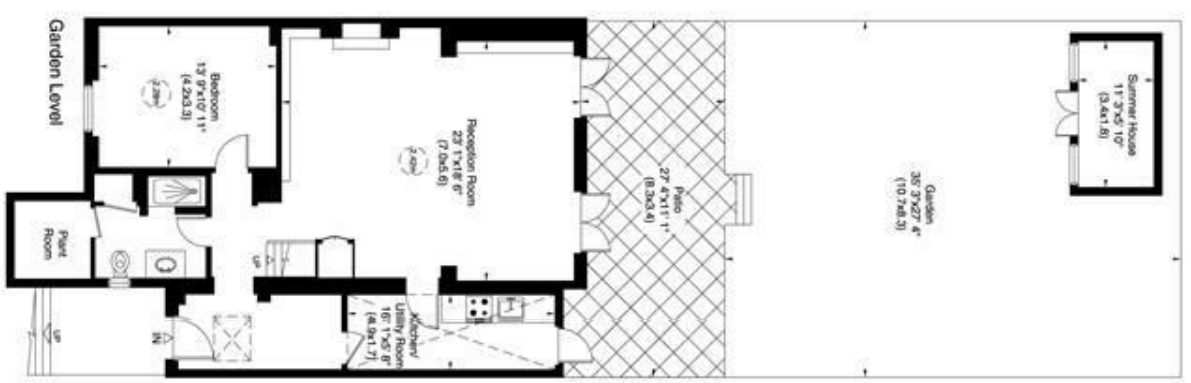




Priory Terrace, NW6

Gross internal area (approx.)
2834 Sq ft (263 Sq m) including Summer House
2768 Sq ft (257 Sq m) Excluding Summer House
For identification only. Not to Scale

capital 020 8671 7722



Raised Ground Floor

First Floor

Second Floor