



Vista Chelsea Bridge,
London, SW11 8BY
£2,550,000 Leasehold

GARTON JONES.COM



Altissima Building, Vista Chelsea Bridge, London, SW11 8BY

£2,550,000 Leasehold



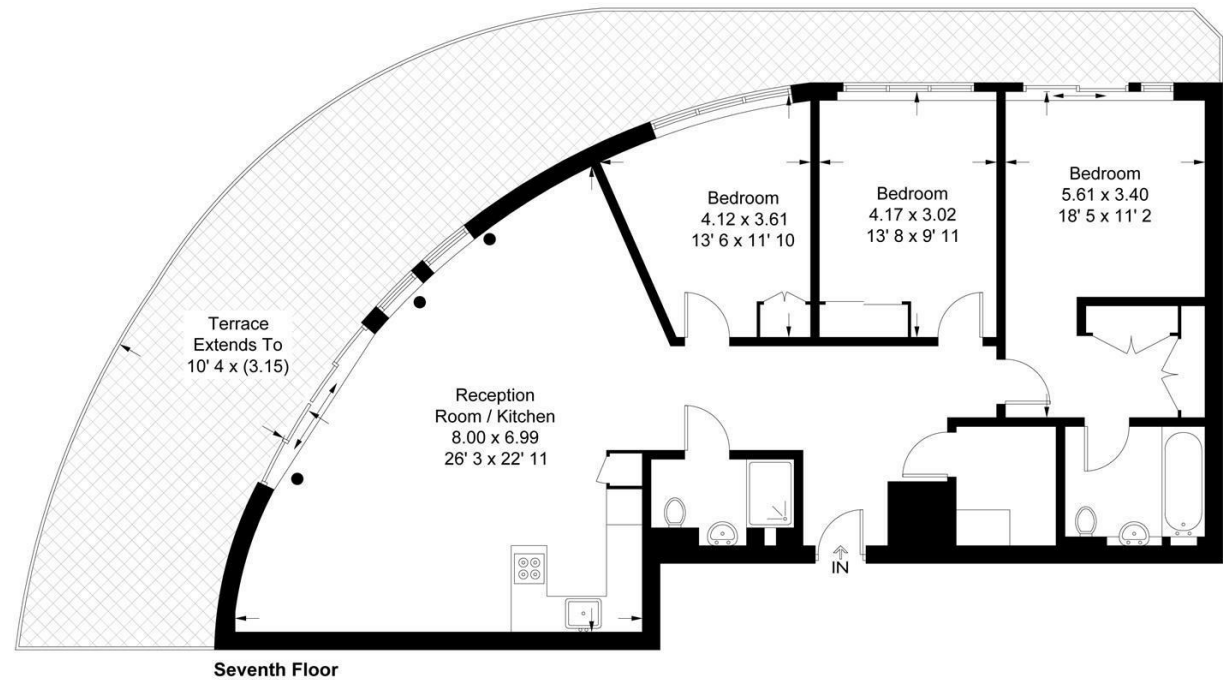
This beautiful and spacious three bedroom apartment is comprised of an open plan fully fitted kitchen with Bosch appliances, bright living room with access to the west facing terrace that surrounds the whole apartment. All three bedrooms are double size rooms with access to the terrace and the master bedroom has a built in wardrobe and en suite bathroom. Additionally there is a second bathroom with a shower suite and storage cabinets on the hallway, one which is housing the washer/dryer. There is wood effect flooring in the kitchen and living room and carpet for extra comfort in the bedrooms.

Located in the beautiful, sculptural building called Vista, Chelsea Bridge Wharf. Located between the wide open spaces of Battersea Park and the exciting redevelopment of Battersea Power Station. The breath taking design of the building is matched by the luxurious finishes internally and fabulous views. The development benefits from an on site gym, swimming pool and 24 hours concierge service.

- Three double bedrooms
- Two large bathrooms
- West facing- Battersea park
- Spacious Terrace
- Open plan Reception and Kitchen
- 1218 sq ft | 113.2 sq m
- Seventh floor
- 24 hour Concierge
- Excellent travel Links
- Close to Central London

Altissima

Approximate Gross Internal Area = 1218 sq ft / 113.2 sq m



Not to scale, for guidance only and must not be relied upon as a statement of fact
All measurements and areas are approximate only and have been prepared in
accordance with the current edition of the RICS Code of Measuring Practice

GARTON JONES.COM

3 Oswald Building
374 Queenstown Road
London
SW11 8NU

sales@gartonjones.co.uk
0207 622 8800
www.gartonjones.com