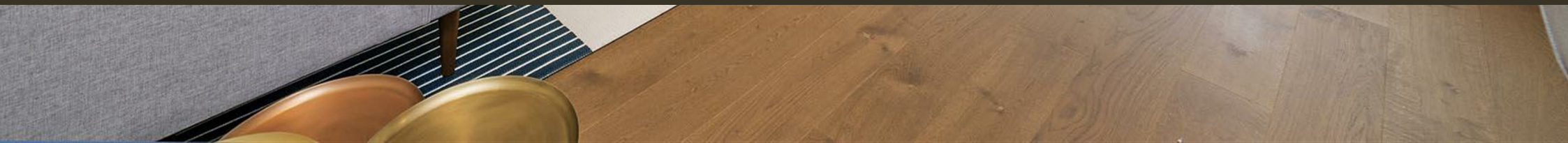




Vista Chelsea Bridge,
London, SW11 8NS
£1,150 Per Week

GARTON JONES.COM



Altissima Building, Vista Chelsea Bridge, London, SW11 8NS

£1,150 Per Week



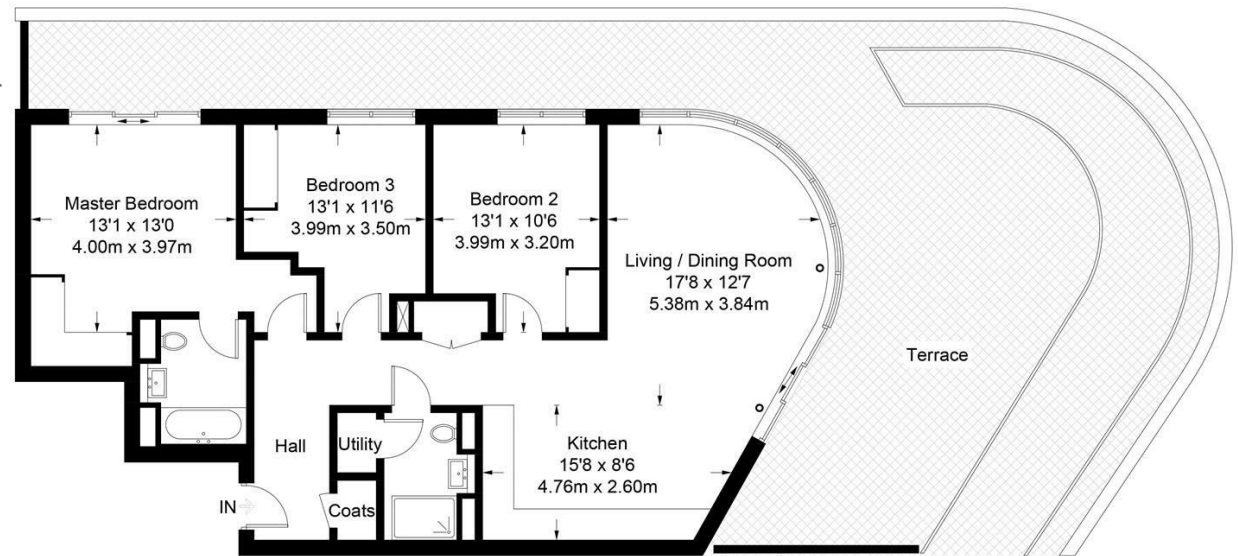
Luxurious three bedroom apartment located on the ninth floor in the Vista Altissima Building. Spacious open plan kitchen with beautiful work surface finishes and a beautifully designed lounge area. Stunning master bedroom has en-suite bathroom as well as a separate bathroom and further two bedrooms in the apartment. Magnificent large windows with large balcony and bright park views.

Fully equipped residents gym and 24 hour concierge. Located between the wide open spaces of Battersea Park and the exciting redevelopment of Battersea Power Station. The breath taking design of the building is matched by the luxurious finishes internally and fabulous views.

- Luxury Three Bedroom, Two Bathroom
- Views Overlooking Battersea Park
- Large Terrace
- Open plan Living and Dining Area
- 1116 sq ft
- Ninth floor
- 24 hour Concierge
- Access to Gym and Pool Facilities
- Excellent travel Links

Altissima Building

Approximate Gross Internal Area = 1116 sq ft / 104 sq m



Ninth Floor

Not to scale, for guidance only and must not be relied upon as a statement of fact. All measurements and areas are approximate only and have been prepared in accordance with the current edition of the RICS Code of Measuring Practice.