



Vista Chelsea Bridge,
London, SW11 8AZ
£720 Per Week

GARTONJONES.COM



Vista Cascade Court,
Vista Chelsea Bridge,
London, SW11 8AZ

£720 Per Week



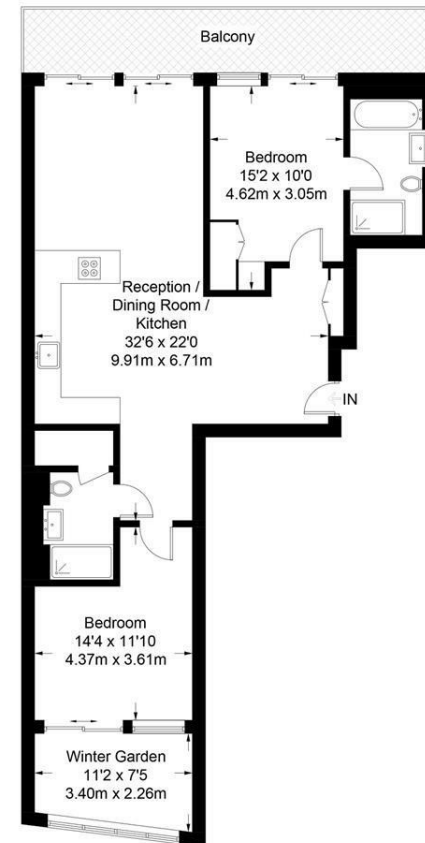
Luxurious two bedroom apartment located on the eleventh floor in the Vista Cascade Building at Chelsea Bridge Wharf. Spacious open plan kitchen with beautiful stone work surface finishes and a beautifully designed lounge area. Lounge area and master bedroom leads on to a large terrace with picturesque Park and garden views. Stunning master bedroom has en-suite bathroom as well as a separate bathroom and further bedroom in the apartment which leads on to another separate terrace with iconic Battersea Power Station views. Magnificent large windows.

Fully equipped residents gym and 24 hour concierge. Located between the wide open spaces of Battersea Park and the exciting redevelopment of Battersea Power Station. The breath taking design of the building is matched by the luxurious finishes internally and fabulous views.

- Two Bedroom, Two Bathroom
- Park Aspect
- Balcony
- Open Plan Reception
- 1,002 sq ft
- 11th floor (with Lift) of 15 Floors
- 24 Hour Concierge
- Gym, Swimming Pool and Sauna
- Excellent travel Links

Cascade Building

Approximate Gross Internal Area = 1002 sq ft / 93.1 sq m
(Including Winter Garden)



Eleventh Floor

Not to scale, for guidance only and must not be relied upon as a statement of fact.
All measurements and areas are approximate only and have been prepared in accordance with the current edition of the RICS Code of Measuring Practice.

GARTON JONES.COM

3 Oswald Building
374 Queenstown Road
London
SW11 8NU

sales@gartonjones.co.uk
0207 622 8800
www.gartonjones.com