



Howard Building,
London, SW11 8NR
£970,000 Leasehold

GARTON JONES.COM

Chelsea Bridge Wharf,
Howard Building,
London, SW11 8NR

£970,000 Leasehold



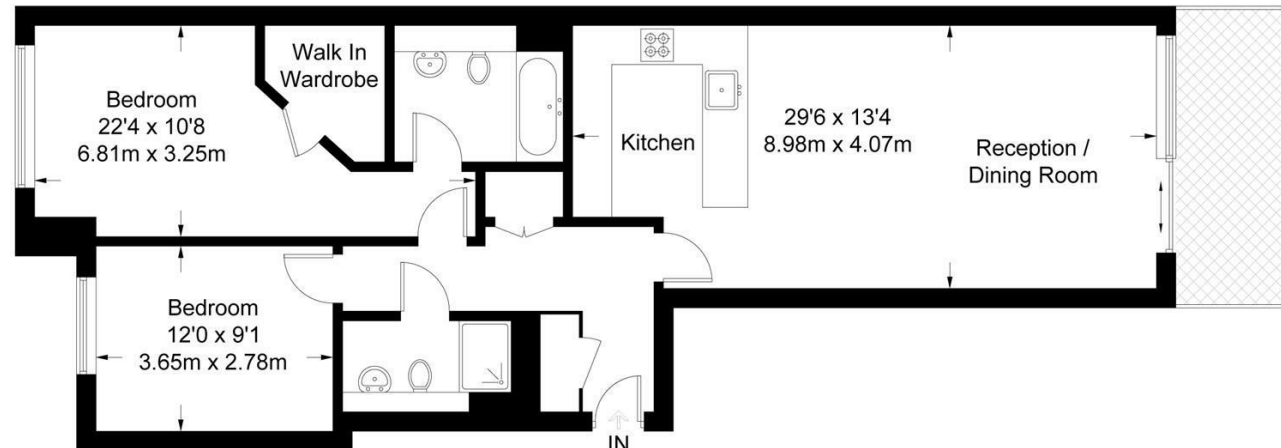
A beautiful two bedroom apartment located on the sixth floor in the Howard Building at Chelsea Bridge Wharf. This brilliant apartment includes a well equipped open plan kitchen and lounge area with cream carpets. Full length windows and access to the terrace. Amazing views over the piazza water gardens and part of the River Thames. Master bedroom with en-suite bathroom and walk-in wardrobe. Great second bedroom and separate shower room/guest WC. "Comfort cooling" throughout and good storage space.

Chelsea Bridge Wharf is London's most glamorous riverside development located just 0.75 miles from Sloane Square and adjacent to the wide open spaces of Battersea Park and the River Thames. 24 hour concierge service and security service. It is also immediately next to the exciting Battersea Power Station project and the forthcoming Northern Line Underground extension.

- Luxury two Bedrooms
- Two Bathrooms
- West facing the Piazza
- Spacious Terrace
- 937 sq ft
- Sixth floor
- Walk-in Closet
- 24 hour Concierge
- Excellent travel links
- Close to amenities

Howard Building

Approximate Gross Internal Area = 937 sq ft / 87.1 sq m



Sixth Floor

Not to scale, for guidance only and must not be relied upon as a statement of fact.
All measurements and areas are approximate only and have been prepared in
accordance with the current edition of the RICS Code of Measuring Practice.