



Cascade Court,
London, SW11 8NS
£1,500,000 Leasehold

GARTON JONES.COM

Vista Chelsea Bridge,
Cascade Court,
London, SW11 8NS

£1,500,000 Leasehold



Luxurious two bedroom apartment located on the ninth floor in the Cascade Building at Vista Chelsea Bridge. Spacious open plan kitchen with beautiful stone work surface finishes and a beautifully designed lounge area. Stunning master bedroom has en-suite bathroom as well as a separate bathroom and further bedroom in the apartment. Magnificent large windows and two private terraces with Battersea Power Station and Battersea Park views.

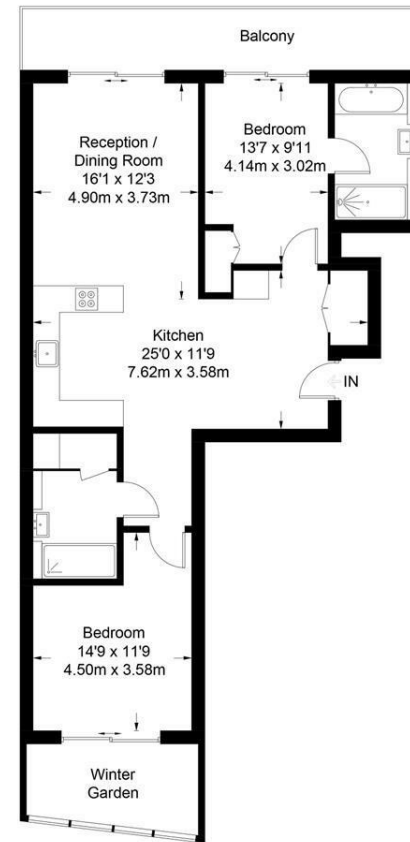
Fully equipped residents gym and 24 hour concierge. Located between the wide open spaces of Battersea Park and the exciting redevelopment of Battersea Power Station. The breath taking design of the building is matched by the luxurious finishes internally and fabulous views.

Lease Length Remaining - 996 years approximately
Current Service Charge - £1300 approximately
Ground Rent - £350 approximately

- Two Bedroom, Two Bathroom
- Park and Power Station Facing Aspects
- Balcony and Winter Garden
- Open Plan Reception
- 1011 sq ft | 93.9 sq m
- Ninth Floor
- 24 hour Concierge
- Access to Resident Facilities
- Facilities include: Gym, Pool and Sauna
- Excellent travel Links

Cascade Building

Approximate Gross Internal Area = 1011 sq ft / 93.9 sq m
(Including Winter Garden)



Ninth Floor

Not to scale, for guidance only and must not be relied upon as a statement of fact.
All measurements and areas are approximate only and have been prepared in accordance with the current edition of the RICS Code of Measuring Practice.