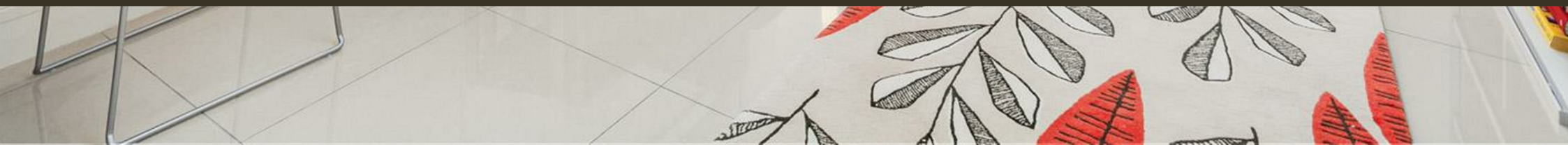




Warwick Building,
London, SW11 8NL
£530,000 Leasehold

GARTONJONES.COM



Chelsea Bridge Wharf, Warwick Building, London, SW11 8NL

£530,000 Leasehold



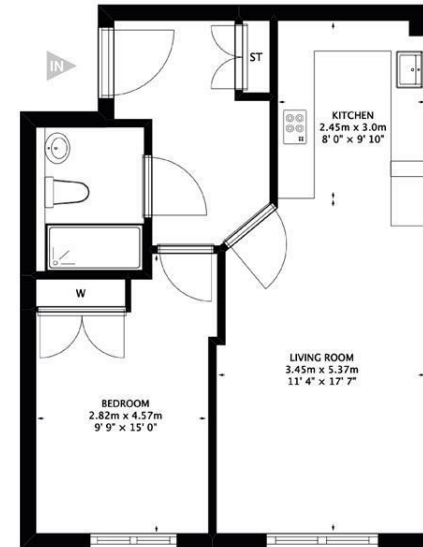
Spacious one bedroom apartment located on the eighth floor in the Warwick Building Chelsea Bridge Wharf. Large living/dining area with a fully equipped open plan kitchen. Balcony with views overlooking Battersea Power Station. Master bedroom with separate bathroom. Good storage space throughout. Secure underground parking is available at an extra cost.

Chelsea Bridge Wharf is London's most glamorous riverside development located just 0.75 miles from Sloane Square and adjacent to the wide open spaces of Battersea Park and the River Thames. 24 hour concierge service and security service.

Lease length remaining - approximately 81 years remaining
Service Charge - £3,072 p/a
Ground Rent - £500 p/a

- One Bedroom, One Bathroom
- Views overlooking Battersea Power Station
- Balcony
- Open plan Kitchen and Living area
- 551.9 sq ft | 51.3 sq m
- Eighth floor
- 24 hour Concierge
- Excellent travel Links

Warwick Building, Chelsea Bridge Wharf
APPROX. GROSS INTERNAL FLOOR AREA: 551.9 sq ft - 51.3 sq m



FOR ILLUSTRATIVE PURPOSES ONLY NOT TO SCALE
Whilst every attempt has been made to ensure the accuracy of the floor plan shown, all measurements, positioning, fixtures, fittings, fittings and other details shown are approximate and intended for illustrative purposes only and are not to scale. All measurements may vary within a tolerance of 5%. No responsibility is taken for any error, omission, mis-statement or use of data shown.
For the avoidance of doubt, Dyreip Rodrigues Photography does not take liability for any reliance on these measurements.
© 2020 Dyreip Rodrigues, www.dyreiprodriques.com