



Vista Chelsea Bridge,
London, SW11 8BW
£1,250,000 Leasehold

GARTON JONES.COM



Sophora House,
Vista Chelsea Bridge,
London, SW11 8BW

£1,250,000 Leasehold

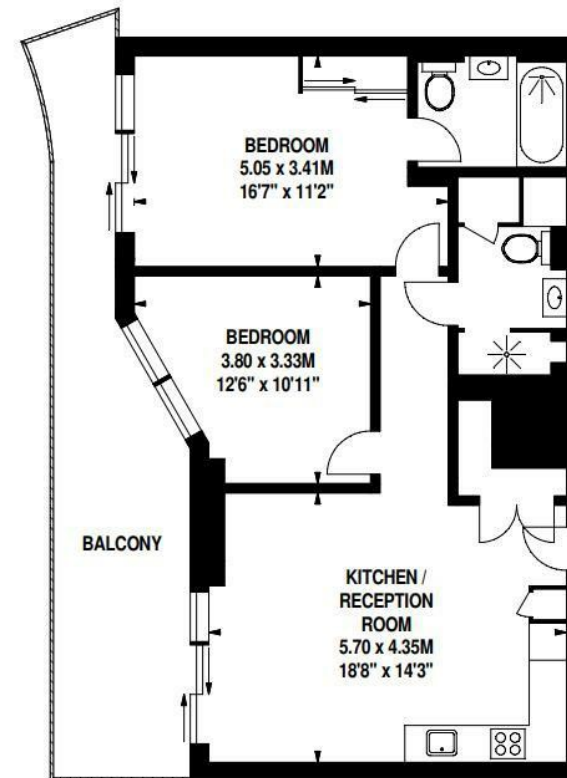


A fabulous brand new, direct Battersea Park facing, 2 bedroom apartment with a large terrace in Sophora house, part of Vista Chelsea Bridge, a new luxury development by Berkeley Homes.

Completed by the developer in September 2017 this never lived in apartment features 2 bedrooms, 1 en-suite bathroom, 1 shower room, an open plan fully equipped kitchen and a spacious living/dining area. Large terrace. Floor to ceiling windows ensure that the flat has an ample amount of natural light. Westerly views are simply stunning, just over the tree line of Battersea Park. Exclusive amenities include a 24-hour concierge service, a fully equipped residents' gym, swimming pool, sauna/steam, two beautiful communal gardens. The currently nearest tube station is Sloane Square, but the property is located just moments away from the forthcoming Battersea Power Station tube station (Northern Line extension).

- Luxury two Bed, two Bath
- Battersea Park Facing
- Large Terrace
- Open Plan Reception and Kitchen
- 775 sq ft
- Sixth floor
- 24 Hour Concierge
- Residents' Gym, Swimming Pool

Sophora House, SW11
Approximate Gross Internal Area 72 sq m / 775 sq ft



Sixth Floor