



Scott House,
London, SW11 8EJ
£550 Per Week

GARTON JONES.COM



Battersea Power Station,
Scott House,
London, SW11 8EJ

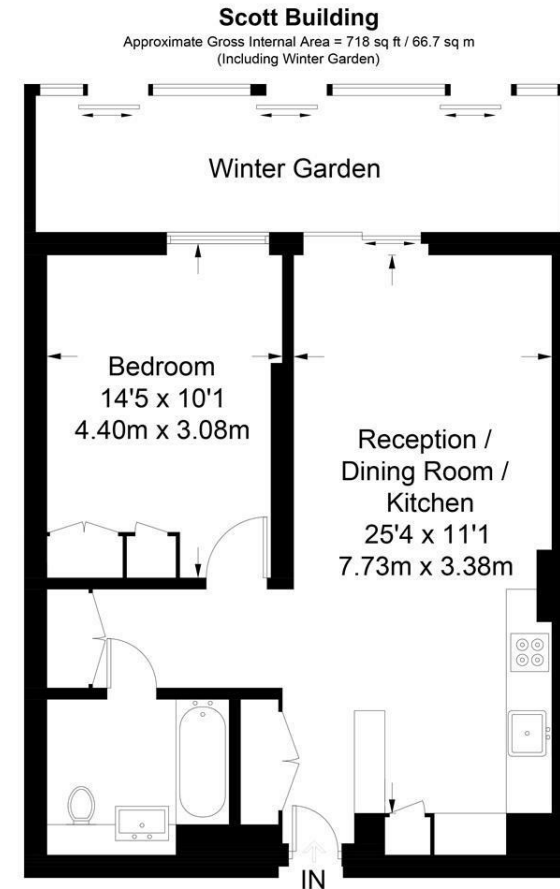
£550 Per Week



Located on the tenth floor this new one bedroom apartment is comprised of an open plan fully fitted kitchen, large living room with access to the West facing winter garden. The bedroom is a good size room with a built in wardrobe. the bathroom is modern and features plenty of storage cabinets. Furthermore the apartment has air conditioning system installed.

Circus West is the first phase of the highly anticipated Battersea Power Station Development. Situated on the River Thames, Circus West is ideally located for Chelsea, Battersea Park and the tube and rail stations nearby.

- Double bedroom
- Spacious bathroom
- West facing Aspect
- Winter Garden
- Open plan fitted Kitchen
- 718 sq ft
- Tenth floor
- Air Conditioning
- Secure development with 24 hour Concierge
- Facilities include: Pool, Gym, Sauna and Residents Lounge



Tenth Floor

Not to scale, for guidance only and must not be relied upon as a statement of fact.
All measurements and areas are approximate only and have been prepared in
accordance with the current edition of the RICS Code of Measuring Practice.