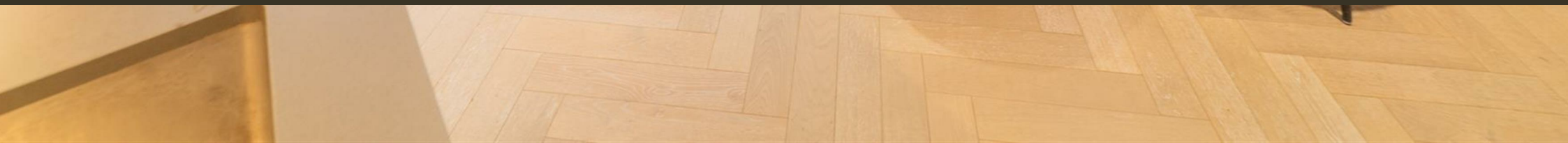




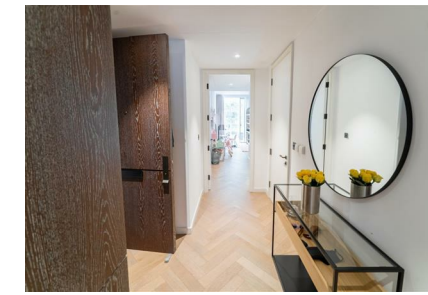
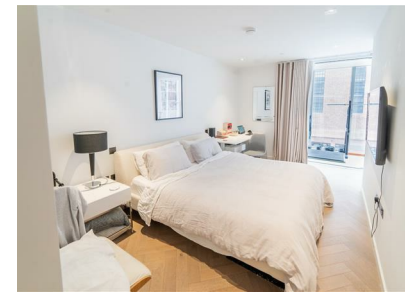
Battersea Power Station,  
London, SW11 8EN  
£1,375,000 Leasehold

GARTON JONES.COM



Dawson House,  
Battersea Power Station,  
London, SW11 8EN

£1,375,000 Leasehold



This stunning new build two bedroom apartment is located on the second floor with balcony space over looking peaceful gardens. The apartment offers a fully fitted kitchen, two good sized bedrooms, one with an ensuite, a reception room, a separate modern bathroom and plenty of storage. Apartment comes with an Underground Parking Space.

The residents of Circus West will also have access to a private garden and a 465 sq ft private residents' club, designed by the renowned David Linley. Entered through a triple height lobby area, it is home to a private bar and private dining space, as well as a library, business center private cinema and a host of additional amenities for the benefit of residents.

- Luxurious Two bedroom, Two bathroom
- Views facing East
- Winter Gardens
- Open plan Kitchen and Reception area
- 1076.4 sq ft | 100.0 sq m
- Second floor
- 24 hour Concierge
- Access to on-site facilities
- Plenty of Storage
- Parking Space included in Sale Price



**Dawson House  
Second Floor**

Net Saleable area - 1076.4 sq ft | 100.0 sq m  
Winter Garden - 181.9 sq ft | 16.9 sq m