



Eustace Building,
London, SW11 8NT
£425 Per Week

GARTON JONES.COM



Chelsea Bridge Wharf,
Eustace Building,
London, SW11 8NT

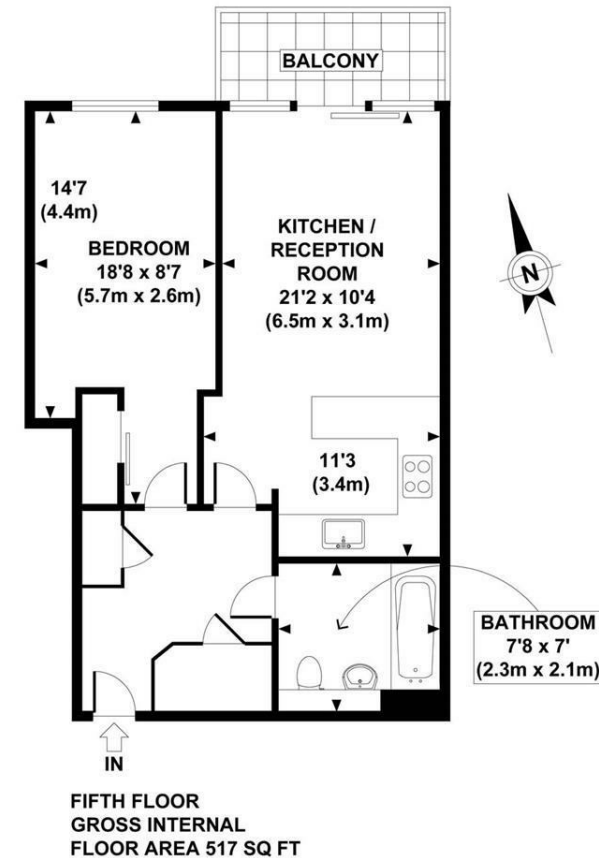
£425 Per Week



Bright and spacious one bedroom apartment located on the fifth floor of the Eustace Building in Chelsea Bridge Wharf. Large living/dining area leads onto balcony with picturesque views overlooking the piazza water gardens. Fully equipped open plan kitchen. Bedroom is of a generous size with a separate tiled bathroom. Floor to ceiling windows throughout the property allow in plenty of light. Good storage space throughout.

Chelsea Bridge Wharf is London's most glamorous riverside development located just 0.75 miles from Sloane Square and adjacent to the wide open spaces of Battersea Park and the River Thames. 24 hour concierge service and security service.

- Double Bedroom
- Spacious Bathroom
- Views overlooking the Piazza
- Balcony
- 517 sq ft
- Fifth floor
- 24 hour Concierge
- Excellent travel links
- Close to amenities



APPROX. GROSS INTERNAL FLOOR AREA 517 SQ FT / 48 SQ M