



Chelsea Bridge Wharf,  
London, SW11 8AE  
£345 Per Week

GARTON JONES.COM

Hawker Building,  
Chelsea Bridge Wharf,  
London, SW11 8AE

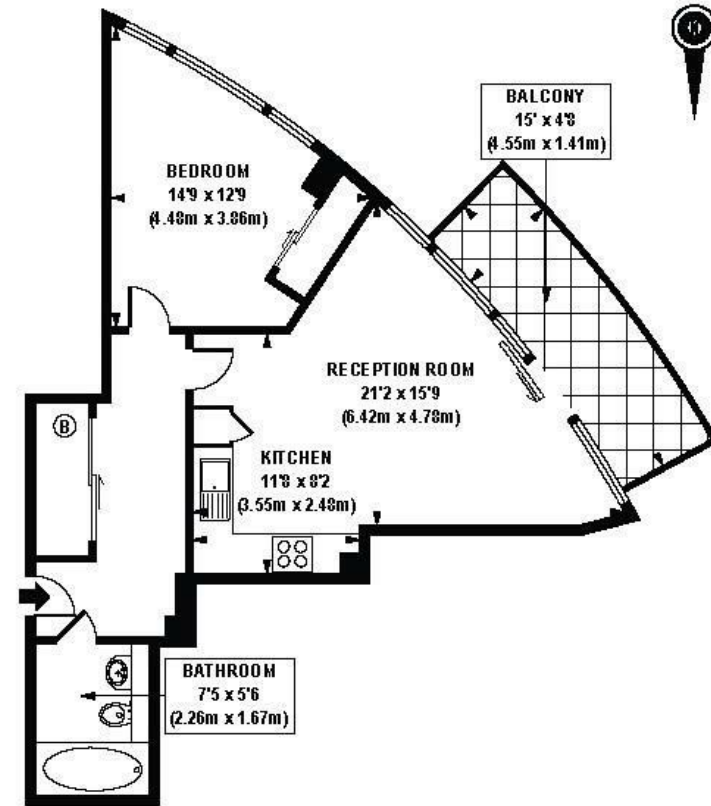
£345 Per Week



Luxurious one bedroom apartment located on the podium floor in the Hawker Building at Chelsea Bridge Wharf. Spacious living/dining area with a fully equipped open plan kitchen. Large balcony with views towards Battersea Park. Master bedroom with separate beautifully designed bathroom. Lots of storage space throughout the apartment.

Chelsea Bridge Wharf is London's most glamorous riverside development located just 0.75 miles from Sloane Square and adjacent to the wide open spaces of Battersea Park and the River Thames. 24 hour concierge service and security service.

- One Bedroom, One Bathroom
- Views facing towards Battersea Park
- Balcony
- Open plan Kitchen and Reception Area
- 496 sq ft
- Podium Level
- 24 hour Concierge
- Excellent travel Links



GROUND FLOOR

APPROX. GROSS INTERNAL FLOOR AREA 496 sq. ft / 46.11 sq. m