



Oswald Building,
London, SW11 8NU
£1,350,000 Leasehold

GARTON JONES.COM



Chelsea Bridge Wharf,
Oswald Building,
London, SW11 8NU

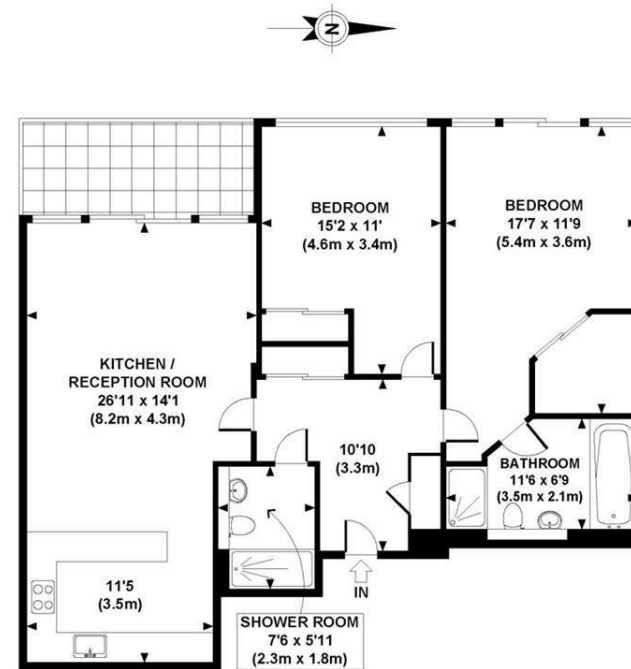
£1,350,000 Leasehold



A spacious and beautiful two bedroom apartment located on the sixth floor in the Oswald Building at Chelsea Bridge Wharf. There is an open plan kitchen/living area, complete with lovely views of Battersea park. Master bedroom comes with large walk-in wardrobe and en-suite bathroom and shower. Second bedroom. Separate shower room/guest wc. Wooden floor throughout hallway and lounge. Lots of storage space throughout.

Chelsea Bridge Wharf is London's most glamorous riverside development located just 0.75 miles from Sloane Square and adjacent to the wide open spaces of Battersea Park and the River Thames. 24 hour concierge service and security service.

- Two Double Bedrooms
- Two Bathrooms
- Views towards Battersea Park
- Spacious Balcony
- 974 sq ft | 91 sq m
- Sixth floor
- Comfort Cooling System
- Walk-in Closet
- 24 hour Concierge
- Excellent travel Links



GROSS INTERNAL
FLOOR AREA 974 SQ FT

APPROX. GROSS INTERNAL FLOOR AREA 974 SQ FT / 91 SQ M
Ref: MJGJCBW - 210910 Copyright **photoplan.co.uk**
Floorplans are for identification and guideline purposes only, not to scale.
Compliant with RICS code of measuring practice.