



Cascade Court,
London, SW11 8AZ
£520 Per Week

GARTON JONES.COM



Vista Chelsea Bridge,
Cascade Court,
London, SW11 8AZ

£520 Per Week



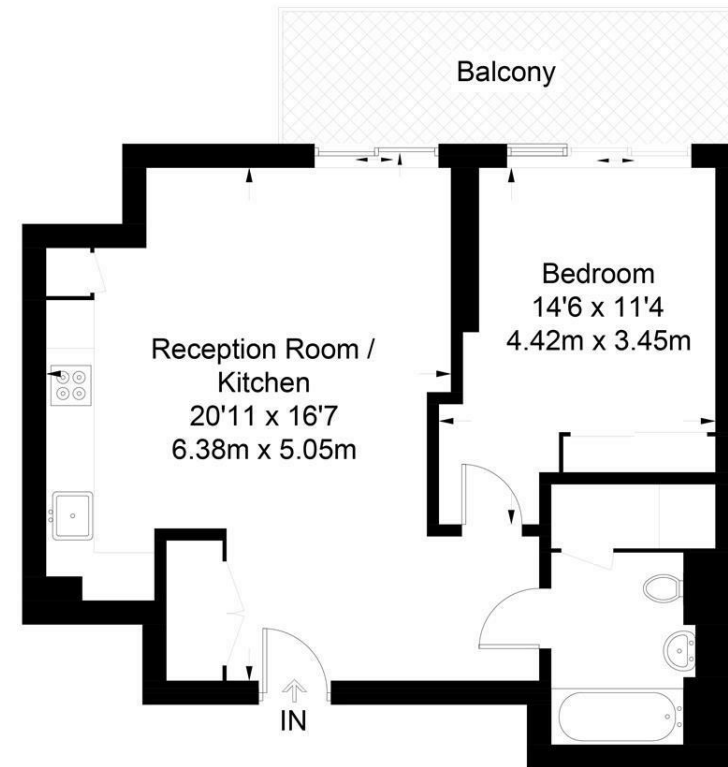
Stylish one bedroom apartment located on the ninth floor in the Vista Cascade Building at Chelsea Bridge Wharf. Spacious open plan kitchen with beautiful stone work surface finishes and a beautifully designed lounge area. Large and modish bedroom. Magnificent large windows and terrace has stunning views of the gardens and Battersea Park. Fully equipped residents gym and 24-hour concierge.

Beautiful, sculptural building called Vista, Chelsea Bridge Wharf. Located between the wide open spaces of Battersea Park and the exciting redevelopment of Battersea Power Station. The breathtaking design of the building is matched by the luxury finishes internally and fabulous views.

- Luxury One Bedroom, One Bathroom
- Views Overlooking Battersea Park
- Balcony
- Open plan Living and Kitchen area
- 565 sq ft
- Ninth floor
- Modern Finish
- 24 Hour Concierge
- Gym, Sauna and Pool Available to Residents
- Excellent travel Links

Cascade Building

Approximate Gross Internal Area = 565 sq ft / 52.5 sq m



Ninth Floor

Not to scale, for guidance only and must not be relied upon as a statement of fact.
All measurements and areas are approximate only and have been prepared in
accordance with the current edition of the RICS Code of Measuring Practice.