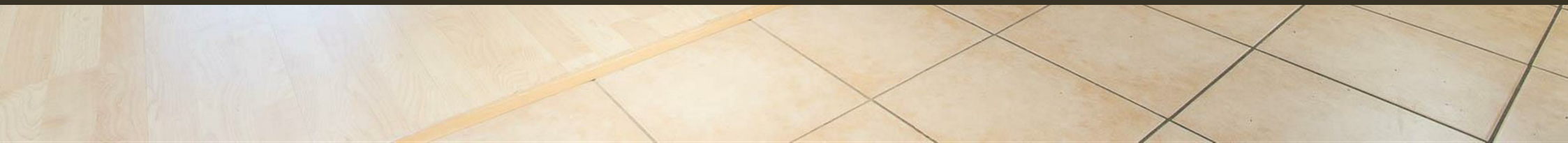




Chelsea Bridge Wharf,
London, SW11 8PL
£635,000 Leasehold

GARTON JONES.COM



Warwick Building,
Chelsea Bridge Wharf,
London, SW11 8PL

£635,000 Leasehold

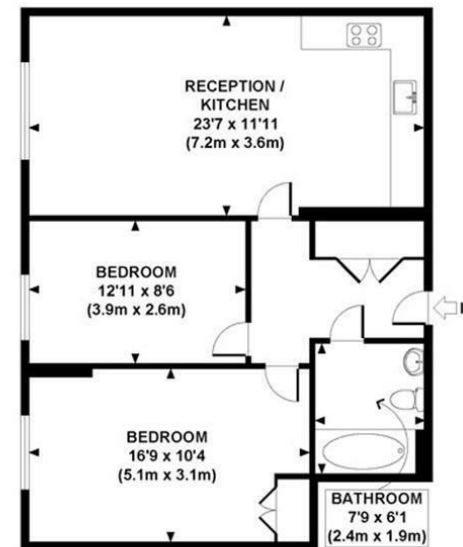


A pleasant two bedroom apartment located on the second floor in the Warwick Building at Chelsea Bridge Wharf. The apartment has views of the iconic Battersea power station. A well structured open plan kitchen and comfortable living area. Spacious two bedrooms. Separate bathroom/shower. The apartment has comfort cooling throughout and storage space.

Chelsea Bridge Wharf is London's most glamorous riverside development just 0.75 miles from Sloane Square and adjacent to the wide open spaces of Battersea Park and the river Thames. There is a 24 hour concierge service and security service. A luxury hotel is on the development.

- Underground parking space included in Sales Price -

- Two Bedroom, One Bathroom
- Views facing Battersea Power Station
- Open plan Kitchen and Reception area
- 713 sq ft | 66 sq m
- Second floor
- Underground Parking Space Included
- 24 hour Concierge
- Excellent travel Links



SECOND FLOOR
GROSS INTERNAL
FLOOR AREA 713 SQ FT

APPROX. GROSS INTERNAL FLOOR AREA 713 SQ FT / 66 SQ M
GCGJCBW - 200110 Copyright photoplan.co.uk
Floorplans are for identification and guideline purposes only, not to scale.
Compliant with RICS code of measuring practice.

GARTON JONES.COM

3 Oswald Building
374 Queenstown Road
London
SW11 8NU

sales@gartonjones.co.uk
0207 622 8800
www.gartonjones.com