



GARTON JONES

Warwick Building,
London, SW11 8NL
£650,000 Leasehold

GARTON JONES.COM

Chelsea Bridge Wharf,
Warwick Building,
London, SW11 8NL

£650,000 Leasehold



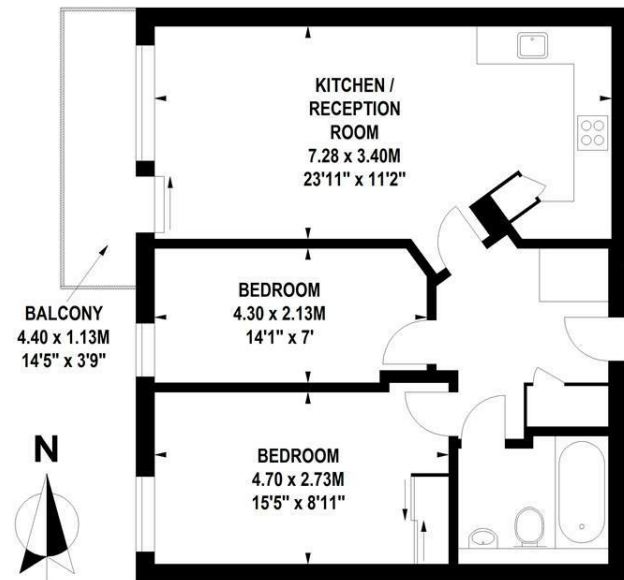
Bright and beautiful, spacious west-facing apartment located on the Sixth floor of Warwick Building at Chelsea Bridge Wharf development. Featuring two double Bedrooms, brand new, well equipped fitted Kitchen, open plan Living area with a spacious Terrace overlooking the peaceful water Gardens below. Separate Bathroom/Shower with ample built-in storage throughout.

Nestled in between the lush green space of Battersea Park and the bustling Heart of the City – Chelsea Bridge Wharf is London's most glamorous riverside development. Located just 0.75 miles from Sloane Square and adjacent to the wide-open spaces of Battersea Park. There is a 24-hour Concierge and Security Service based on site.

- Two Bedroom, One Bathroom
- Views overlooking Piazza Water Gardens
- Balcony
- Open plan Kitchen and Reception area
- 710 sq ft | 66 sq m
- Sixth floor
- 24 hour Concierge
- Excellent travel Links
- Close to Central London

Warwick Building, SW11

Approximate Gross Internal Area 66 sq m / 710 sq ft



Sixth Floor

Floor Plan produced for Garton Jones by Mays Floorplans © . Tel 020 3397 4594
Illustration for identification purposes only, not to scale
All measurements are maximum, and include wardrobes and window bays where applicable

GARTON JONES.COM

3 Oswald Building
374 Queenstown Road
London
SW11 8NU

sales@gartonjones.co.uk
0207 622 8800
www.gartonjones.com