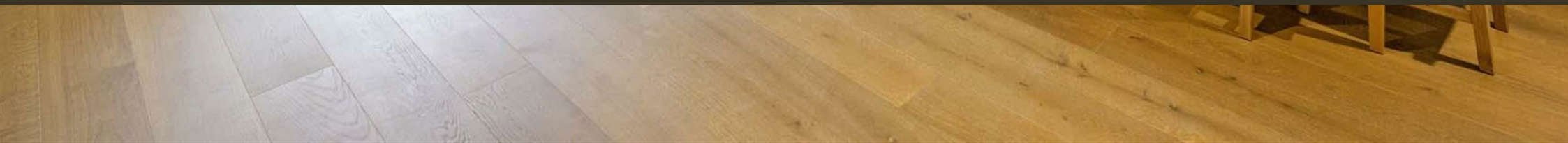




Vista Chelsea Bridge,  
London, SW11 8BW  
£475 Per Week

GARTON JONES.COM



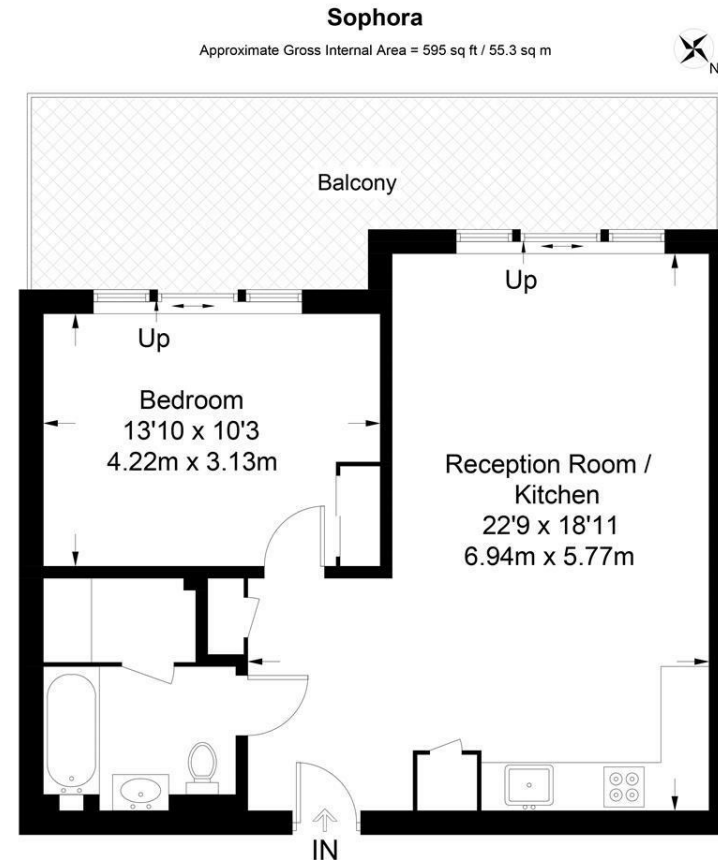
Sophora House,  
Vista Chelsea Bridge,  
London, SW11 8BW

£475 Per Week



Exquisitely furnished one bedroom apartment located on the ninth floor in the Vista Sophora Building at Chelsea Bridge Wharf. Spacious open plan kitchen with beautiful stone work surface finishes and a beautifully designed lounge area. Generous size bedroom with a separate bathroom and reception area. Magnificent large windows allow in plenty of light. Private terrace with views of the iconic Battersea Power Station. Fully equipped residents' gym and 24-hour concierge. Located between the wide open spaces of Battersea Park and the exciting redevelopment of Battersea Power Station.

- One bedroom, One bathroom
- Views facing Battersea Power Station
- Balcony
- Open plan Kitchen and Reception area
- 595 sq ft
- Ninth floor
- 24 hour Concierge
- Excellent travel Links



**Ninth Floor**

Not to scale, for guidance only and must not be relied upon as a statement of fact.  
All measurements and areas are approximate only and have been prepared in accordance with the current edition of the RICS Code of Measuring Practice.