



Chelsea Bridge Wharf,
London, SW11 8QN
£455 Per Week

GARTONJONES.COM



Lanson Building,
Chelsea Bridge Wharf,
London, SW11 8QN

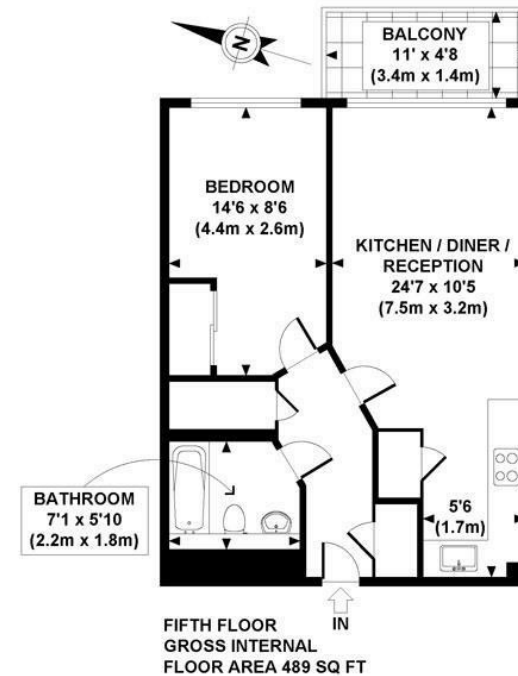
£455 Per Week



Gorgeous one bedroom apartment located on the fifth floor in the Lanson Building at Chelsea Bridge Wharf. The apartment has a lovely terrace with views over the piazza. Well equipped open plan kitchen and lounge area with full length windows. Master bedroom has great space with a large built in wardrobe. Wooden flooring throughout and good storage.

Chelsea Bridge Wharf is London's most glamorous riverside development located just 0.75 miles from Sloane Square and adjacent to the wide open spaces of Battersea Park and the River Thames. 24 hour concierge service and security service.

- Luxury One Bedroom, Once Bathroom
- Views Overlooking Piazza Water Gardens
- Lovely Terrace
- Open plan Kitchen area
- 489 sq ft
- Fifth floor
- Good Storage
- 24 hour Concierge
- Excellent travel Links



APPROX. GROSS INTERNAL FLOOR AREA 489 SQ FT / 45 SQ M
GCGJCBW - 050210 Copyright photoplan.co.uk
Floorplans are for identification and guideline purposes only, not to scale.
Compliant with RICS code of measuring practice.