



Chelsea Bridge Wharf,  
London, SW11 8NL  
£475,000 Leasehold

GARTON JONES.COM



Warwick Building,  
Chelsea Bridge Wharf,  
London, SW11 8NL

£475,000 Leasehold

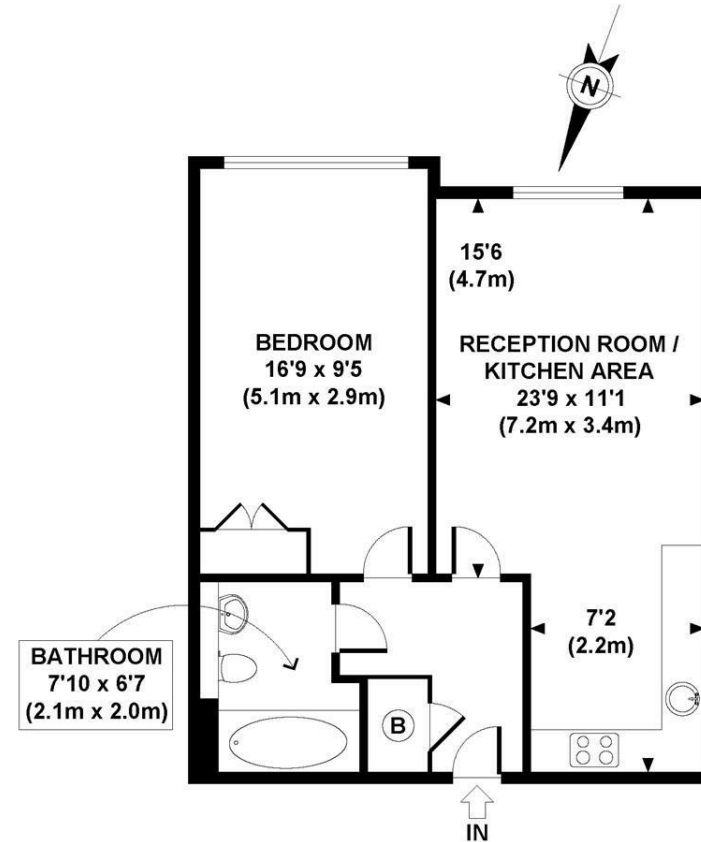


Beautiful one bedroom apartment located on the seventh floor in the Warwick Building at Chelsea Bridge Wharf. Open plan kitchen and lounge area. Fantastic views looking towards the iconic Battersea Power Station. Master bedroom includes built-in wardrobe and a separate bathroom. 'Comfort cooling' and lots of storage throughout the apartment.

Chelsea Bridge Wharf is London's most glamorous riverside development located just 0.75 miles from Sloane Square and adjacent to the wide open spaces of Battersea Park and the River Thames. 24 hour concierge service and security service.

Lease length remaining - 81 years

- One Bedroom, One Bathroom
- Views facing Battersea Power Station
- Open plan Kitchen and Reception area
- 505 sq ft | 47 sq m
- Seventh floor
- Walk-in Wardrobe
- 'Comfort Cooling' throughout
- 24 hour Concierge
- Excellent travel Links



SEVENTH FLOOR  
GROSS INTERNAL  
FLOOR AREA 505 SQ FT

APPROX. GROSS INTERNAL FLOOR AREA 505 SQ FT / 47 SQ M

GARTON JONES.COM

3 Oswald Building  
374 Queenstown Road  
London  
SW11 8NU

[sales@gartonjones.co.uk](mailto:sales@gartonjones.co.uk)  
0207 622 8800  
[www.gartonjones.com](http://www.gartonjones.com)