



Chelsea Bridge Wharf,  
London, SW11 8NJ  
£750,000 Leasehold

GARTON JONES.COM



Warwick Building,  
Chelsea Bridge Wharf,  
London, SW11 8NJ

£750,000 Leasehold

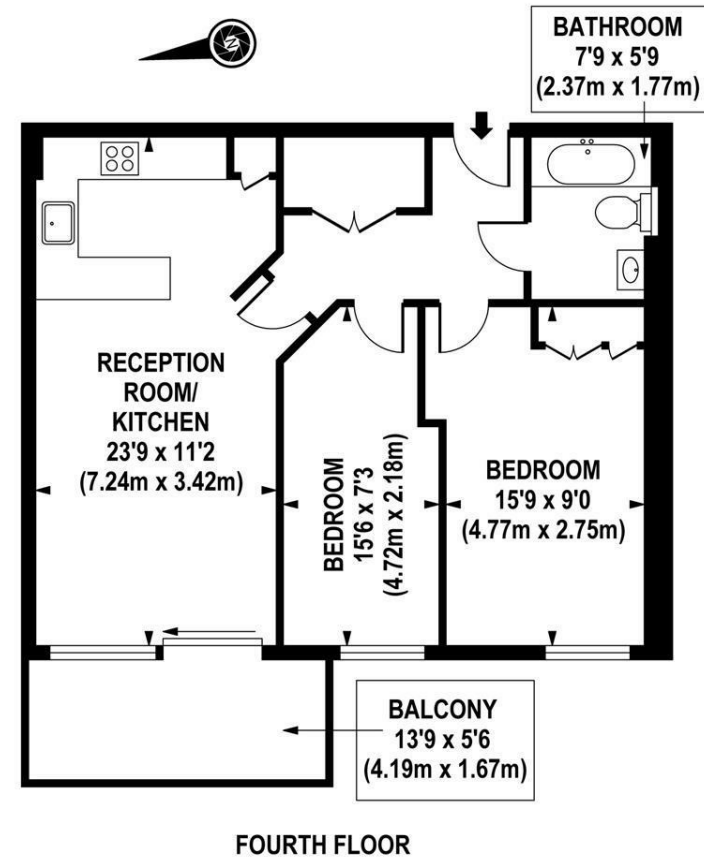


A lovely two bedroom apartment located on the fourth floor in the Warwick Building at Chelsea Bridge Wharf. Has a well equipped open plan kitchen/living area, with peaceful views over looking the water gardens of the Piazza from its spacious terrace. Good size bedroom's and separate bathroom/shower. Lots of storage space. Full length window's.

Chelsea Bridge Wharf is London's most glamorous riverside development located just 0.75 miles from Sloane Square and adjacent to the wide open spaces of Battersea Park. There is a 24 hour concierge and security service. A luxury four star hotel is located at the development.

Lease length remaining - 81 years

- Two Bedroom, One Bathroom
- Views overlooking Piazza
- Terrace
- Open plan Kitchen and Reception
- 670 sq ft | 62.24 sq m
- Fourth floor
- 24 hour Concierge
- Good storage throughout



APPROX. GROSS INTERNAL AREA 670 sq.ft / 62.24 sq.m