



Howard Building,
London, SW11 8NR
£940,000 Leasehold

GARTONJONES.COM



Chelsea Bridge Wharf,
Howard Building,
London, SW11 8NR

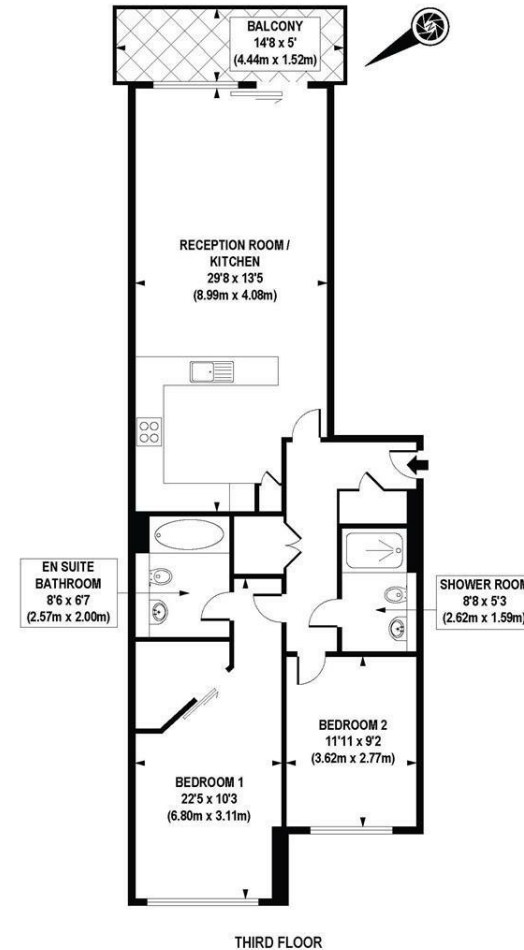
£940,000 Leasehold



Luxury two bedroom apartment located on the third floor in the Howard Building at Chelsea Bridge Wharf. Large open plan kitchen and lounge area with wooden flooring. Full length windows with access to the spacious west-facing terrace and views over the piazza water gardens. Master bedroom with en-suite bathroom and walk-in wardrobe. Second bedroom and separate shower room. 'Comfort cooling' throughout and good storage.

Chelsea Bridge Wharf is London's most glamorous riverside development located just 0.75 miles from Sloane Square and adjacent to the wide open spaces of Battersea Park and the River Thames. 24 hour concierge service and security service.

- Luxury Two Bedrooms
- Two Bathrooms
- Views to Piazza Water Gardens
- Spacious Balcony
- 908 sq ft | 84.31 sq m
- Third floor
- Walk-In- Wardrobe
- Comfort Cooling
- 24 hour Concierge
- Excellent travel Links



THIRD FLOOR

APPROX. GROSS INTERNAL FLOOR AREA 908 sq. ft / 84.31 sq. m

GARTON JONES.COM

3 Oswald Building
374 Queenstown Road
London
SW11 8NU

sales@gartonjones.co.uk
0207 622 8800
www.gartonjones.com