



Chelsea Bridge Wharf,  
London, SW11 8NR  
£420 Per Week

GARTON JONES.COM



# Howard Building, Chelsea Bridge Wharf, London, SW11 8NR

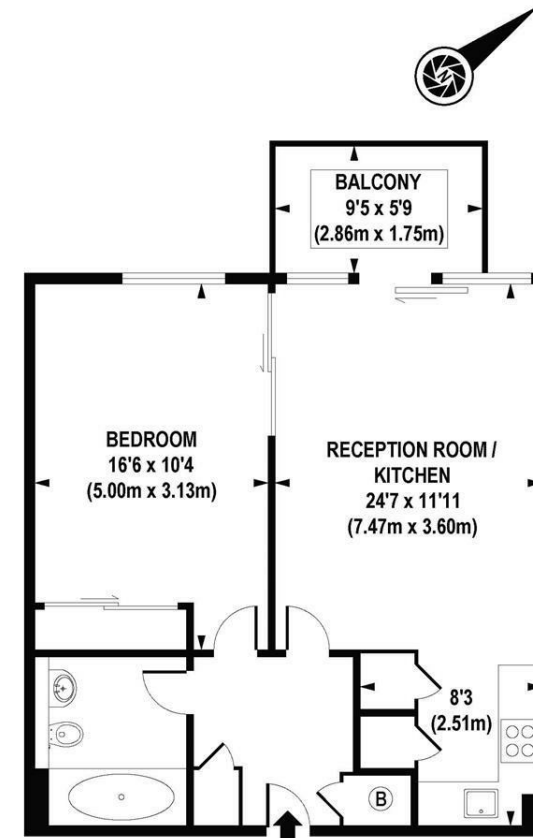
£420 Per Week



Luxurious one bedroom apartment located on the second floor of the Howard Building in Chelsea Bridge Wharf. Spacious living/dining area which leads on to a large terrace with stunning views of the peaceful piazza. Bedroom is of a generous size with a separate bathroom. Good storage space throughout.

Chelsea Bridge Wharf is London's most glamorous riverside development located just 0.75 miles from Sloane Square and adjacent to the wide open spaces of Battersea Park and the River Thames. 24 hour concierge service and security service.

- One Bedroom, One Bathroom
- Views facing Piazza
- Balcony
- Open Plan Reception
- 563 sq ft
- Second Floor (With Lift) Of 7 Floors
- 24 hour Concierge
- Excellent travel Links



SECOND FLOOR

APPROXIMATE GROSS INTERNAL AREA 563 sq. ft / 52.29 sq. m