



Chelsea Bridge Wharf,
London, SW11 8PL
£315,000 Leasehold

GARTON JONES.COM



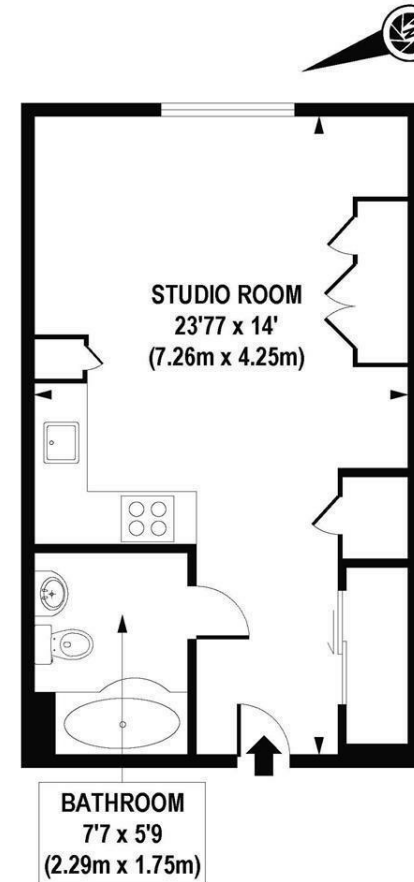
Warwick Building,
Chelsea Bridge Wharf,
London, SW11 8PL

£315,000 Leasehold



Studio apartment located on the 4th floor in the Warwick Building at Chelsea Bridge Wharf. Open plan kitchen and lounge/bed area with a pull-down wall bed. Separate big bathroom. Full length windows with views of the iconic Battersea Power Station. Lots of storage throughout. Chelsea Bridge Wharf is London's most glamorous riverside development located just 0.75 miles from Sloane Square and adjacent to the wide open spaces of Battersea Park and the River Thames. 24 hour concierge service and security service. Secure underground car parking is available at extra cost.

- Spacious studio
- Views facing Power Station
- Open plan kitchen
- 332 sq ft
- Seventh floor
- 24 Hour Concierge
- Comfort cooling system
- Triple Glazing



APPROXIMATE GROSS INTERNAL AREA 332 sq. ft / 30.88 sq. m

GARTON JONES.COM

3 Oswald Building
374 Queenstown Road
London
SW11 8NU

sales@gartonjones.co.uk
0207 622 8800
www.gartonjones.com