



Chelsea Bridge Wharf,  
London, SW11 8NJ  
£515,000 Leasehold

GARTON JONES.COM



Warwick Building,  
Chelsea Bridge Wharf,  
London, SW11 8NJ

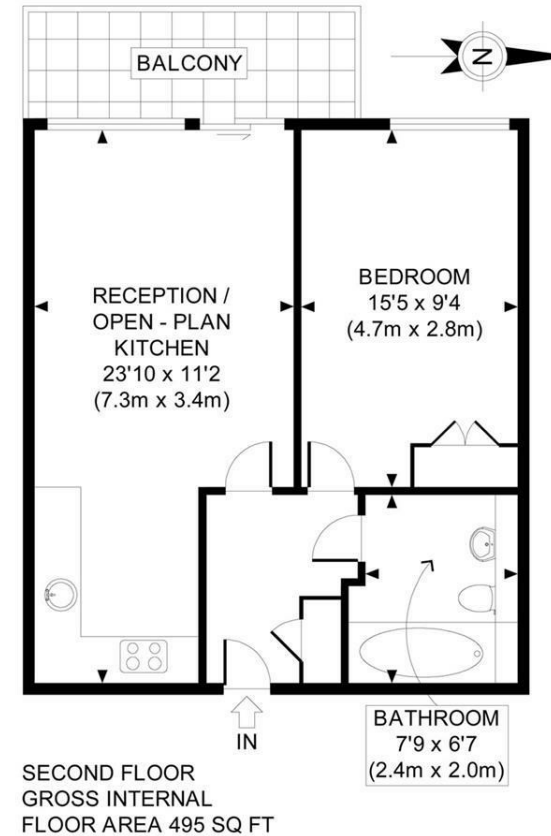
£515,000 Leasehold



An attractive one bedroom apartment on the second floor in the Warwick Building, Chelsea Bridge Wharf. The apartment has peaceful views overlooking the piazza water gardens. Open plan kitchen with living area with full length windows and large terrace. Great master bedroom with built-in wardrobe. West facing views, with lots of natural light.

Chelsea Bridge Wharf is London's most glamorous riverside development just 0.75 miles from Sloane Square and adjacent to the wide open spaces of Battersea Park and the River Thames. There is a 24 hour concierge service and security service.

- Spacious one bedroom
- Piazza facing
- Balcony
- Open Plan Reception Area
- 495 sq ft
- Second floor
- 24 Hour Concierge



APPROX. GROSS INTERNAL FLOOR AREA 495 SQ FT / 46 SQ M  
Ref: BGGJCBW - 160211 Copyright **photoplan.co.uk**  
Floorplans are for identification and guideline purposes only, not to scale.  
Compliant with RICS code of measuring practice.