

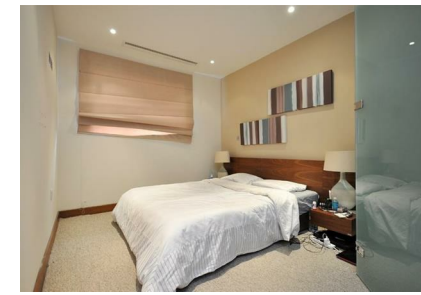


Chelsea Bridge Wharf,
London, SW11 8QQ
£525 Per Week

GARTONJONES.COM

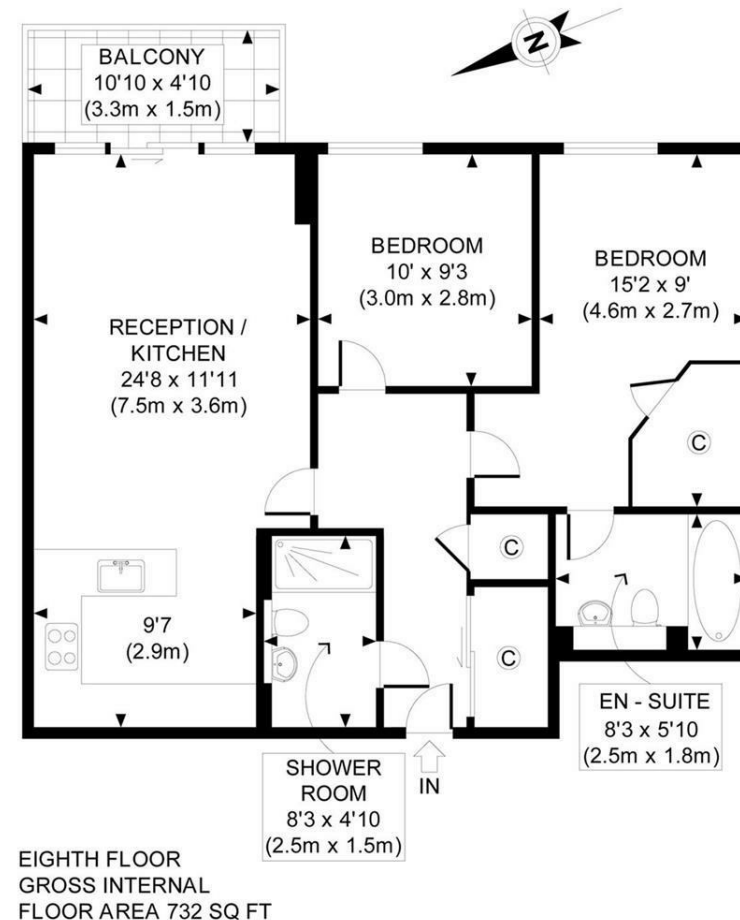
Lanson Building,
Chelsea Bridge Wharf,
London, SW11 8QQ

£525 Per Week



Beautiful two bedroom apartment located on the eighth floor in the Lanson Building at Chelsea Bridge Wharf. This apartment has views overlooking the peaceful piazza gardens. Open plan kitchen and lounge area. Master bedroom with en-suite bathroom and walk-in wardrobe. Second bedroom with separate bathroom. 'Comfort cooling' and lots of storage space throughout. Chelsea Bridge Wharf is London's most glamorous riverside development located just 0.75 miles from Sloane Square and adjacent to the wide open spaces of Battersea Park and the River Thames. 24 hour concierge service and security service. Secure underground car parking is available at extra cost.

- Modern Two Bedroom, Two Bathroom
- East facing Piazza Aspect
- Balcony
- Open plan Reception area
- 732 sq ft
- Eighth floor
- 24 hour Concierge
- Excellent travel Links



EIGHTH FLOOR
GROSS INTERNAL
FLOOR AREA 732 SQ FT

APPROX. GROSS INTERNAL FLOOR AREA 732 SQ FT / 68 SQ M