



Burnelli Building,
London, SW11 8NG
£825,000 Leasehold

GARTON JONES.COM



Chelsea Bridge Wharf,
Burnelli Building,
London, SW11 8NG

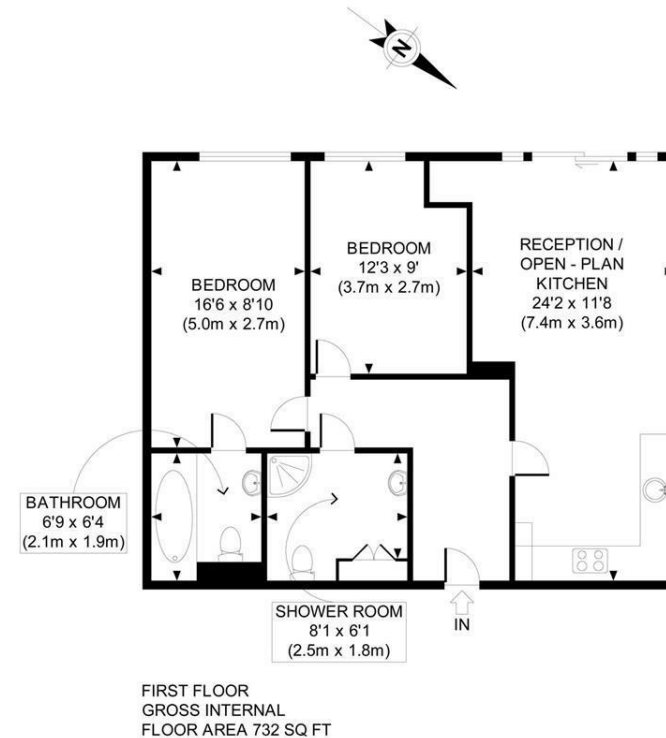
£825,000 Leasehold



A brand new two bedroom apartment located on the first floor in the Burnelli Building at Chelsea Bridge Wharf. This well furnished one bed has an open plan kitchen/living area with full length windows, piazza facing views. Great size bedrooms and two bathrooms. Plenty of storage space throughout and includes air-conditioning.

Chelsea Bridge Wharf is London's most glamorous riverside development located just 0.75 miles from Sloane Square. There is a 24 hour concierge and security service. A luxury four star hotel is located at the development.

- Spacious Two Bedroom
- Two Bathrooms
- Views overlooking Piazza
- 732 sq ft | 68 sq m
- First floor
- 24 hour Concierge
- Comfort cooling throughout
- Excellent travel Links
- Close to amenities



APPROX. GROSS INTERNAL FLOOR AREA 732 SQ FT / 68 SQ M
Ref: BGGJCBW - 050711 Copyright photonplan.co.uk
Floorplans are for identification and guideline purposes only, not to scale.
Compliant with RICS code of measuring practice.