



Chelsea Bridge Wharf,
London, SW11 8QQ
£330 Per Week

GARTON JONES.COM



Lanson Building, Chelsea Bridge Wharf, London, SW11 8QQ

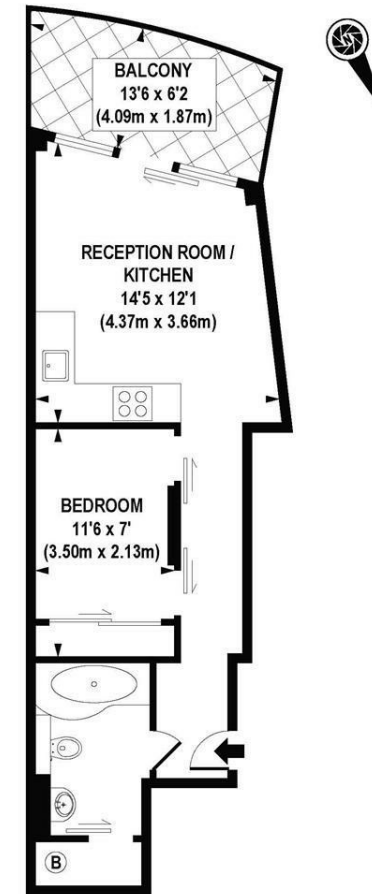
£330 Per Week



A beautiful Manhattan style one bedroom apartment located on the sixth floor of the Lanson Building at Chelsea Bridge Wharf. Lovely open plan kitchen and lounge area with wooden flooring. Spacious master bedroom with separate bathroom. Full length windows and access to the great terrace with views over Battersea Park.

Chelsea Bridge Wharf is London's most glamorous riverside development located just 0.75 miles from Sloane Square and adjacent to the wide open spaces of Battersea Park and the River Thames. 24 hour concierge service and security service. It is also immediately next to the exciting Battersea Power Station project and the forthcoming Northern Line Underground extension.

- Luxury Manhattan apartment
- West facing aspect
- Balcony
- Open plan Kitchen and Reception area
- 362 sq ft
- Sixth floor
- 24 hour Concierge



SIXTH FLOOR

APPROXIMATE GROSS INTERNAL AREA 362 sq. ft / 33.65 sq. m