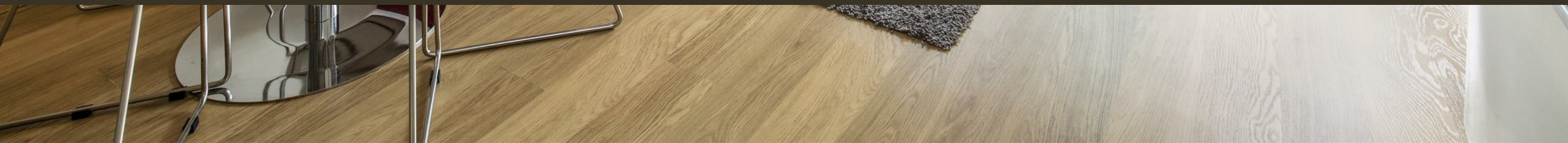




Chelsea Bridge Wharf,
London, SW11 8NJ
£375 Per Week

GARTONJONES.COM



Warwick Building, Chelsea Bridge Wharf, London, SW11 8NJ

£375 Per Week



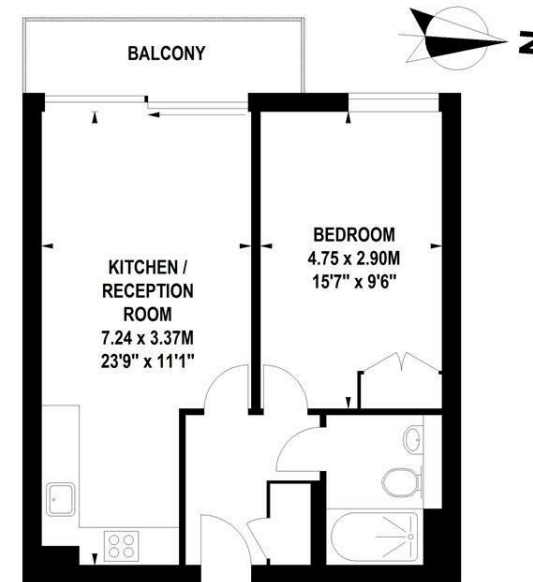
A fantastic one bedroom apartment on the fourth floor in the Warwick Building, Chelsea Bridge Wharf. Spacious living/dining area which leads on to a large balcony with picturesque views of the piazza. Generous size master bedroom with large built in wardrobe. Wooden flooring throughout.

Chelsea Bridge Wharf is London's most glamorous riverside development located just 0.75 miles from Sloane Square and adjacent to the wide open spaces of Battersea Park and the River Thames. 24 hour concierge service and security service.

- One Bedroom, One Bathroom
- Views facing Piazza
- Terrace
- Open plan kitchen
- 488 sq ft
- Fourth floor
- 24 Hour Concierge
- Excellent travel Links

Warwick Building, SW11

Approximate Gross Internal Area 46.5 sq m / 501 sq ft



Fourth Floor

Floor Plan produced for Garton Jones by Mays Floorplans © . Tel 020 3397 4594
Illustration for identification purposes only, not to scale
All measurements are maximum, and include wardrobes and window bays where applicable