



Vista Chelsea Bridge,
London, SW11 8AZ
£700 Per Week

GARTONJONES.COM



Altissima House,
Vista Chelsea Bridge,
London, SW11 8AZ

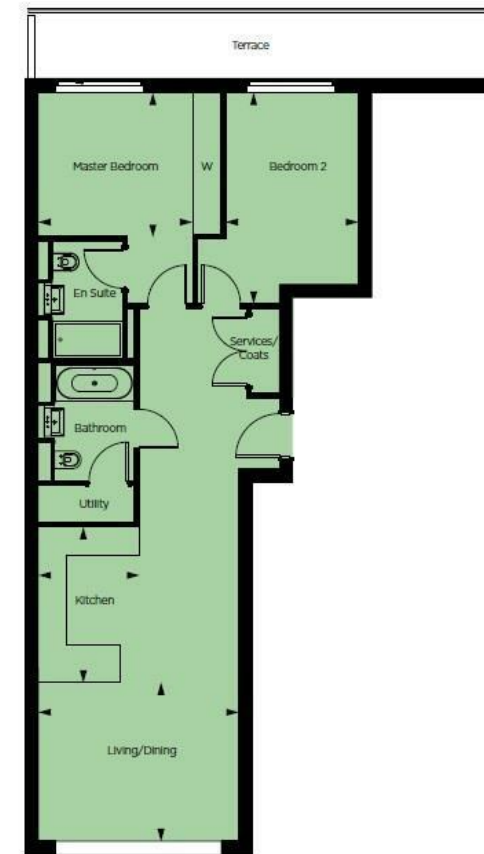
£700 Per Week



Luxurious two bedroom apartment located on the tenth floor in the Vista Altissima Building at Chelsea Bridge Wharf. Spacious open plan kitchen with beautiful stone work surface finishes and beautifully designed lounge area. Beautiful two bedrooms and separate bathroom. Magnificent large windows and private terrace with stunning Battersea Park views.

Fully equipped residents' gym and 24-hour concierge. Located between the wide open spaces of Battersea Park and the exciting redevelopment of Battersea Power Station. The breath taking design of the building is matched by the luxury finishes internally and fabulous views.

- Two Bedroom, Two Bathroom
- Park views
- Balcony
- Open plan Reception
- 878 sq ft
- Tenth floor
- 'Comfort Cooling' throughout
- Resident access to Gym, Swimming Pool and Sauna
- 24 hour concierge
- Excellent travel Links



Kitchen	7'1" x 10'10"	2150mm x 3300mm
Living/Dining	14'0" x 11'	4270mm x 3375mm
Master Bedroom	10'9" x 10'0"	3283mm x 3050mm
Bedroom 2	9'3" x 14'9"	2827mm x 4490mm
Total	878 sq ft	82 sq m