



Chelsea Bridge Wharf,  
London, SW11 8NG  
£350 Per Week

GARTON JONES.COM



Burnelli Building,  
Chelsea Bridge Wharf,  
London, SW11 8NG

£350 Per Week

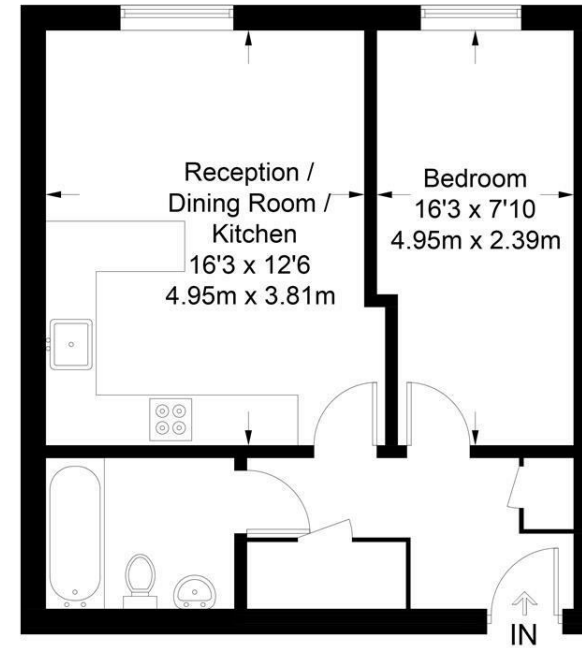


A gorgeous one bedroom apartment located on the sixth floor in the Burnelli Building at Chelsea Bridge Wharf. Amazing open plan kitchen and lounge area with full length windows. Views overlooking the iconic Battersea Power Station. Nicely designed main bedroom and separate bathroom. Wooden flooring throughout.

Chelsea Bridge Wharf is London's most glamorous riverside development located just 0.75 miles from Sloane Square and adjacent to the wide open spaces of Battersea Park and the River Thames. 24 hour concierge service and security service.

- Spacious One Bedroom, One Bathroom
- East facing aspect
- Open plan Reception Area
- 468 sq ft
- Sixth floor
- 24 hour Concierge
- Excellent travel Links
- Modern Finish

**Burnelli Building**  
Approximate Gross Internal Area = 468 sq ft / 43.5 sq m



**Sixth Floor**

Not to scale, for guidance only and must not be relied upon as a statement of fact.  
All measurements and areas are approximate only and have been prepared in accordance with the current edition of the RICS Code of Measuring Practice.