



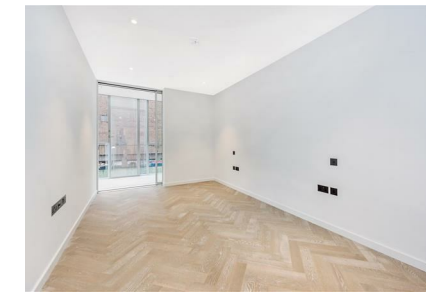
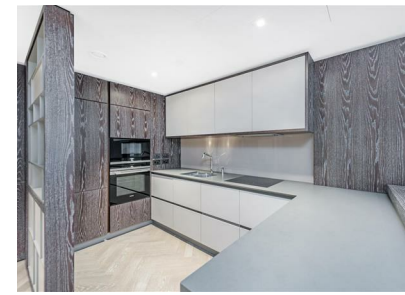
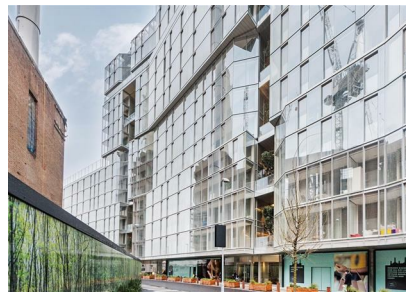
Fladgate House,
London, SW11 8EU
£1,200,000 Leasehold

[GARTON JONES.COM](https://www.gartonjones.com)



Battersea Power Station,
Fladgate House,
London, SW11 8EU

£1,200,000 Leasehold

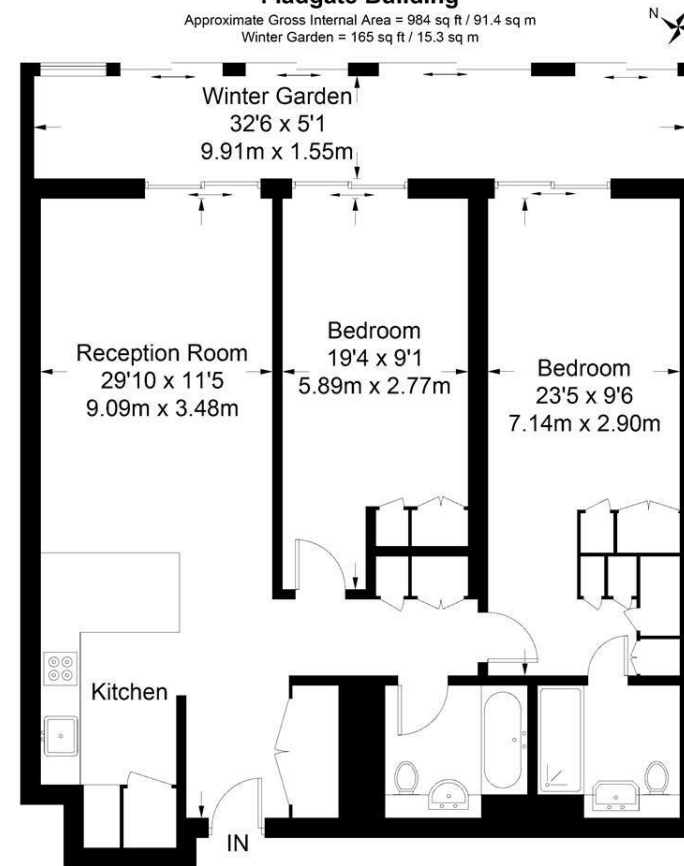


Luxurious east facing two bedroom apartment located on the first floor in Fladgate House, offering luxury living space within the exciting new Battersea Power Station development. Spacious living area with a large terrace which has views of Battersea Power Station. Master bedroom has en-suite with a further bedroom and separate bathroom in the apartment. The apartments themselves have been designed by award-winning interior designer Johnson Naylor. Floor to ceiling windows and taller than average ceilings maximise views out and light in. The finishes blend modernity and luxury with touches of art deco intricacy, with recreations of period light fittings and architectural ironmongery. Wooden floors and open-plan layouts generate a feeling of space and warmth. The residents of Circus West will also have access to a private garden and a 5,000 sq ft private residents' club, designed by the renowned David Linley. Entered through a triple height lobby area, it is home to a private bar and private dining space, as well as a library, business centre, private cinema and a host of additional amenities for the benefit of residents.

- Two double bedrooms
- Two spacious bathrooms
- Views facing Power Station
- Open plan reception
- Winter garden
- 984 sq ft | 91.4 sq m
- First floor
- Comfort cooling system
- Residents onsite facilities
- Close to amenities

Fladgate Building

Approximate Gross Internal Area = 984 sq ft / 91.4 sq m
Winter Garden = 165 sq ft / 15.3 sq m



First Floor

Not to scale, for guidance only and must not be relied upon as a statement of fact. All measurements and areas are approximate only and have been prepared in accordance with the current edition of the RICS Code of Measuring Practice.