



Chelsea Bridge Wharf,  
London, SW11 8NG  
£550,000 Leasehold

GARTON JONES.COM



Burnelli Building,  
Chelsea Bridge Wharf,  
London, SW11 8NG

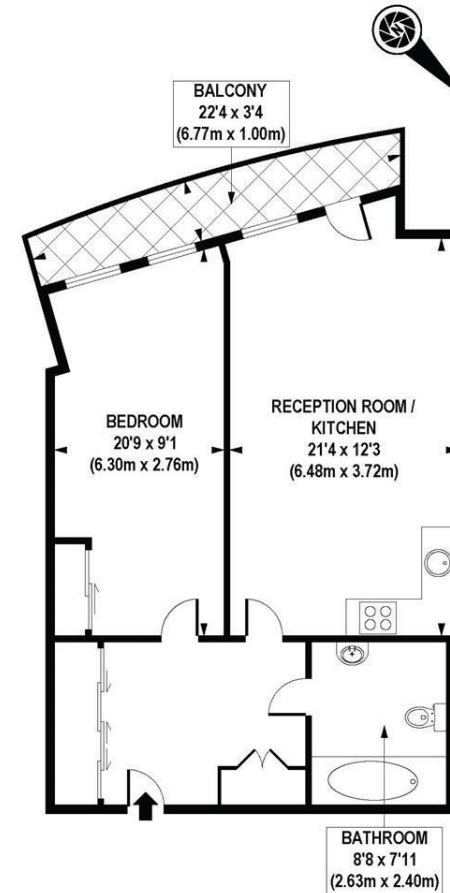
£550,000 Leasehold



Very large one bedroom apartment located on the first floor in the Burnelli Building at Chelsea Bridge Wharf. Open plan kitchen and lounge area with full length windows. Access to the south facing terrace with views towards Battersea Park. Master bedroom with sliding wardrobe and full length windows. Separate bathroom. Wooden flooring throughout and good storage.

Chelsea Bridge Wharf is London's most glamorous riverside development located just 0.75 miles from Sloane Square and adjacent to the wide open spaces of Battersea Park and the River Thames. 24 hour concierge service and security service.

- Spacious One Bedroom, One Bathroom
- South facing aspect
- Balcony
- Open plan Reception area
- 649 sq ft | 60.34 sq m
- First floor
- 24 hour Concierge
- Excellent travel Links



APPROXIMATE GROSS INTERNAL AREA 649 sq. ft / 60.34 sq. m