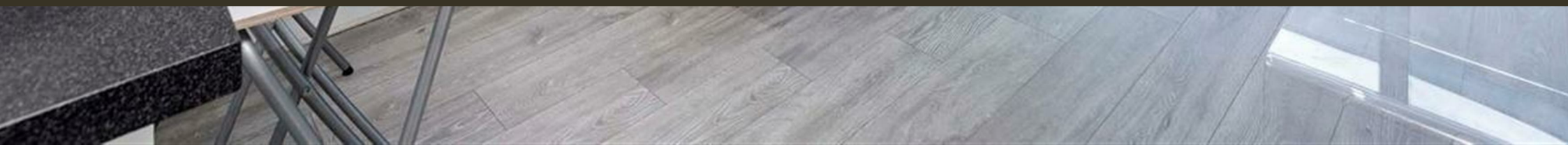




Eustace Building,  
London, SW11 8NT  
£450 Per Week

GARTON JONES.COM



Chelsea Bridge Wharf,  
Eustace Building,  
London, SW11 8NT

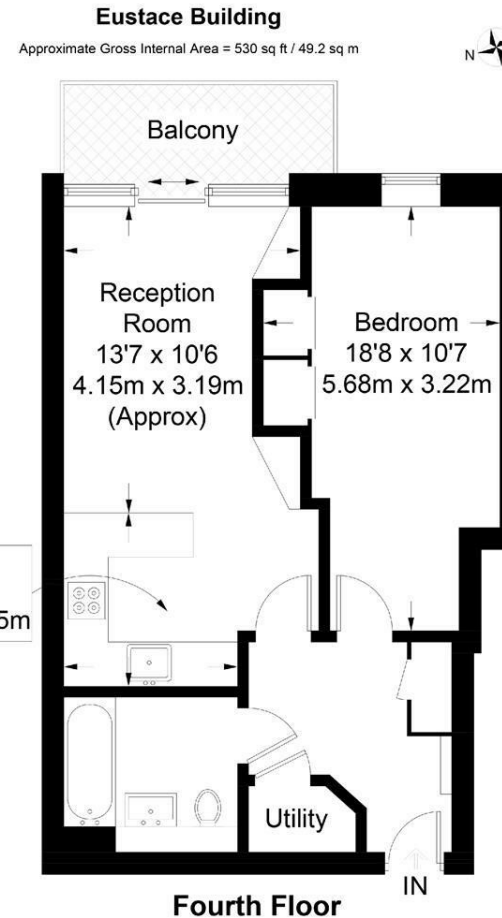
£450 Per Week



A wonderful one bedroom apartment located on the fourth floor in the Eustace Building at Chelsea Bridge Wharf. Open plan kitchen and lounge area complete with a spacious terrace. Amazing views over looking the piazza water gardens. Spacious bedroom with large built-in wardrobe. Good sized separate sandstone bathroom/shower.

Chelsea Bridge Wharf is London's most glamorous riverside development located just 0.75 miles from Sloane Square and adjacent to the wide open spaces of Battersea Park and the River Thames. 24 hour concierge service and security service.

- One Bedroom, One Bathroom
- Views overlooking Piazza
- Balcony
- Open plan Layout
- 530 sq ft
- Fourth floor
- 24 hour Concierge
- Excellent travel Links



Not to scale, for guidance only and must not be relied upon as a statement of fact. All measurements and areas are approximate only and have been prepared in accordance with the current edition of the RICS Code of Measuring Practice.