



Warwick Building,  
London, SW11 8NJ  
£425 Per Week

GARTON JONES.COM



Chelsea Bridge Wharf,  
Warwick Building,  
London, SW11 8NJ

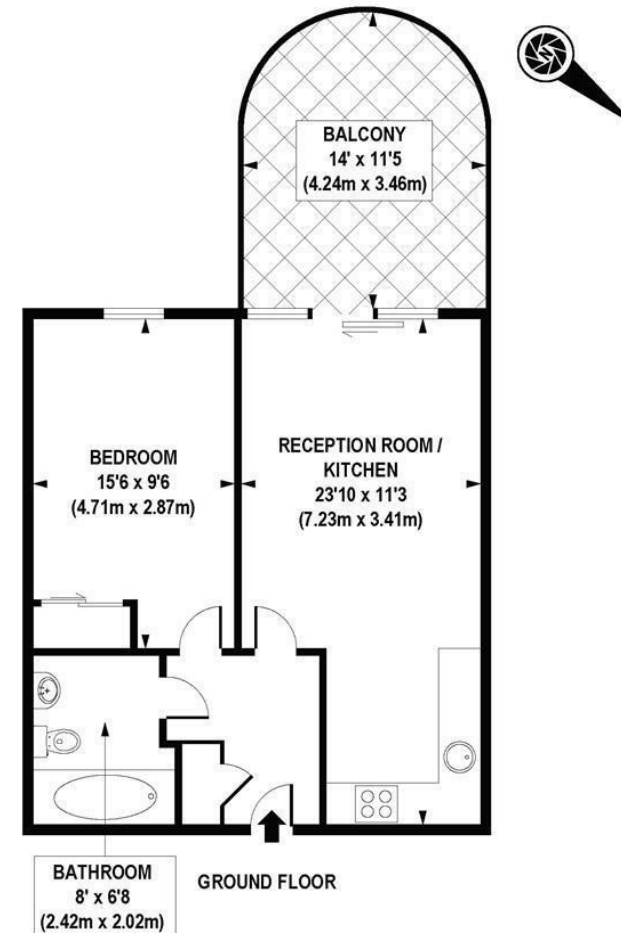
£425 Per Week



Beautiful one bedroom apartment located on the podium level in the Warwick Building at Chelsea Bridge Wharf. Bright open plan kitchen and lounge with full length windows. Access to the large podium terrace with views towards the piazza water gardens. Master bedroom with built-in wardrobe. Separate bathroom. Good storage throughout the apartment.

Chelsea Bridge Wharf is London's most glamorous riverside development located just 0.75 miles from Sloane Square and adjacent to the wide open spaces of Battersea Park and the River Thames. 24 hour concierge service and security service.

- One Bedroom, One Bathroom
- Views overlooking Piazza
- Balcony
- Open plan Reception
- 497 sq ft
- Podium level
- 24 hour Concierge
- Good storage
- Excellent travel Links
- Close to Central London



APPROXIMATE GROSS INTERNAL AREA 497 sq. ft / 46.13 sq. m