



2 DEANS VIEW
TRENERTH ROAD
LEEDSTOWN
HAYLE TR27 6DL

Philip Martin

ESTATE AGENTS, CHARTERED SURVEYORS, VALUERS & AUCTIONEERS

Philip Martin



2 DEANS VIEW

TRENERTH ROAD LEEDSTOWN
HAYLE TR27 6DL

STUNNING BRAND NEW DETACHED HOUSE SITUATED ON THE
EDGE OF LEEDSTOWN

The largest plot of only three brand new houses in a quiet location yet within walking distance of the village shop, pub and primary school.

Individually designed and built to the highest quality and finished to an exceptionally high standard. Extremely well proportioned with light and spacious rooms. Four double bedrooms, two with en suite shower rooms, very large sitting room, fabulous kitchen/dining room with quality integral Neff appliances, cloakroom, utility and family bathroom.

Very energy efficient with lots of insulation and air source heating resulting in low running costs. Underfloor heating throughout.

Large enclosed rear garden with level lawns and large tiled terrace for sitting out. Integral garage, Parking for three cars.

Internal viewing essential. Just completed and ready for immediate occupation.

Freehold. EPC - B. Council Tax - Band TBC.



GUIDE PRICE £625,000

Philip Martin

PHILIP MARTIN

9 Cathedral Lane, Truro, Cornwall, TR1 2QS

Truro: 01872 242244 **St Mawes:** 01326 270008

E: sales@philip-martin.co.uk

www.philip-martin.co.uk

The particulars are issued on the understanding that all negotiations are conducted through Philip Martin who for themselves or for the Vendor whose agents they are, give notice that:

(a) Whilst every care has been taken in preparation of these particulars, their accuracy is not guaranteed, and they do not constitute any part of an offer or contract. Any intended purchaser must satisfy himself by inspection or otherwise as to the correctness of each of the statements contained in these particulars.

(b) They do not accept liability for any inaccuracy in these particulars nor for any travelling expenses incurred by the applicants in viewing properties that may have been let, sold or withdrawn.

GENERAL COMMENTS

2 Deans View is a very attractive brand new detached house that has just been completed and is ready for immediate occupation. The house has been built to the highest of standards and is beautifully appointed with quality kitchen and luxurious bathrooms. The house has the largest plot of only three brand new houses located in a quiet position yet is within walking distance of the village facilities. It has been built with high levels of insulation combined with air source heat pump heating guaranteeing very low running costs. The house also benefits from mechanical ventilation with heat recovery (MVHR) which is an advanced system specifically designed to provide continuous ventilation while recovering heat from extracted air enhancing energy efficiency further. All of the rooms are very well proportioned with large windows that afford plenty of natural light and the whole plot enjoys privacy and a very sunny aspect. There are far reaching views from the first floor over the surrounding countryside. A front brick drive provides parking for three cars and there is an integral garage. Outside are generous enclosed side and rear gardens with level lawns and a large paved terrace providing lots of sitting out space.

The accommodation includes four double bedrooms and family bathroom on the first floor, the master and guest bedrooms have en suite shower rooms. The first floor bedrooms are carpeted whilst the bathroom and en suites are tiled. The ground floor includes an entrance hallway, very large sitting room, stunning kitchen/dining room with quartz worktops and Neff appliances, utility room, cloakroom and integral garage. The ground floor has tiled floors apart from the lounge that is carpeted. The whole property benefits from underfloor heating. Bi fold doors in the kitchen/dining room open into the rear garden onto the large terrace. An internal viewing is essential to appreciate the exceptional build quality and size of this fantastic new home.

In greater detail the accommodation comprises (all measurements are approximate):

ENTRANCE HALL

A fine introduction to the house with oak staircase with glass balustrade leading to first floor with storage below. Composite entrance door. Tiled floor. Doors to sitting room, dining room and cloakroom. Airing cupboard housing Grant unvented hot water cylinder and associated equipment for the air source heat pump. Tiled floor with underfloor heating.

CLOAKROOM

Low level WC, vanity sink unit, frosted window to front. Tiled floor with underfloor heating.

SITTING ROOM

A very well proportioned, light twin aspect room with windows overlooking the front and side. Spotlights, television point. Carpeted with underfloor heating.



KITCHEN/DINING ROOM

A fabulous open plan room ideal for modern day living. Window and bi fold doors enjoying views over the rear garden and affording plenty of natural light. Beautifully appointed and fitted with an excellent range of base level shaker style kitchen units with quality Neff integral appliances, including microwave combination oven, additional single oven, induction hob with extractor fan over, fridge, freezer and dishwasher. Integral bin and recycling drawer. Quartz worktops with splashback and incorporating sink with Quooker mixer tap for instantaneous boiling water. Spotlights. Tiled floor with underfloor heating. Dining area with bi fold doors opening onto the large terrace and rear garden. Door to:

UTILITY ROOM

Base and eye level shaker style kitchen units with quartz worktops and incorporating single sink. Space and plumbing for washing machine and space for tumble dryer. Tiled floor with underfloor heating. Door to:

INTEGRAL GARAGE

Insulated electric roller door. Window overlooking side and half glazed pedestrian door leading to rear garden. Loft access. Light and power.

FIRST FLOOR

Landing. Window to front. Loft access with ladder. Useful storage cupboard.

Philip Martin



MASTER BEDROOM

4.29m x 3.29m (14'0" x 10'9")

Window overlooking the front garden, television point, five amp light sockets for bedside lamps. Underfloor heating. Door to:

EN SUITE

Quality white suite comprising double shower cubicle with fully tiled surround, low-level wc, double vanity sink unit with drawers below and mirror above with light. Tiled floor with underfloor heating. Frosted window to side. Extractor fan. Heated towel rail.

BEDROOM TWO

4.26m x 3.41m (13'11" x 11'2")

Window overlooking the the rear garden and enjoying countryside views beyond. Television point, five amp sockets for bedside lights, underfloor heating. Door to:

EN SUITE

Double shower cubicle with fully tiled surround, low level WC, large vanity sink unit with drawers below and mirror with electric light over. Tiled floor with underfloor heating, heated towel rail, extractor fan.

BEDROOM THREE

3.87 x 3.08 (12'8" x 10'1")

Window overlooking the rear garden and enjoying the countryside views beyond. Five amp sockets for bedside lamps. Television point. Underfloor heating.

BATHROOM

Beautifully appointed with white suite comprising panel bath with fully tiled surround and shower over, double vanity sink unit, low level wc. Heated towel rail, tiled floor with underfloor heating, partially tiled walls and mirror with light.

BEDROOM FOUR

3.91 x 2.36 (12'9" x 7'8")

Window overlooking the front garden, television point, five amp sockets for bedside lights. Underfloor heating.

OUTSIDE

The house is approached from a new tarmac lane through a wide opening with attractive stone pillars into a brick driveway that provides parking for three cars with access to the garage. The front garden is level lawn enclosed behind a wall and wooden fence and pathways lead along both sides of the house via wooden gates to the rear garden. There is an attractive storm porch with oak pillars, external lights and natural slate roof.

REAR GARDEN

2 Deans View has the largest plot of the three houses. The rear garden is enclosed within a solid wooden fence and is therefore very safe for children and pets. There is a large level lawn with scope to create a wonderful garden and a large paved terrace provides plenty of sitting out space accessed from the kitchen/dining room via bi fold doors with outside lights, electric sockets and tap. A pedestrian doorway leads into the garage.

SERVICES

Mains water and electricity. Private drainage. Air Source Heat Pump for heating and hot water.

N.B

The electrical circuit, appliances and heating system have not been tested by the agents.

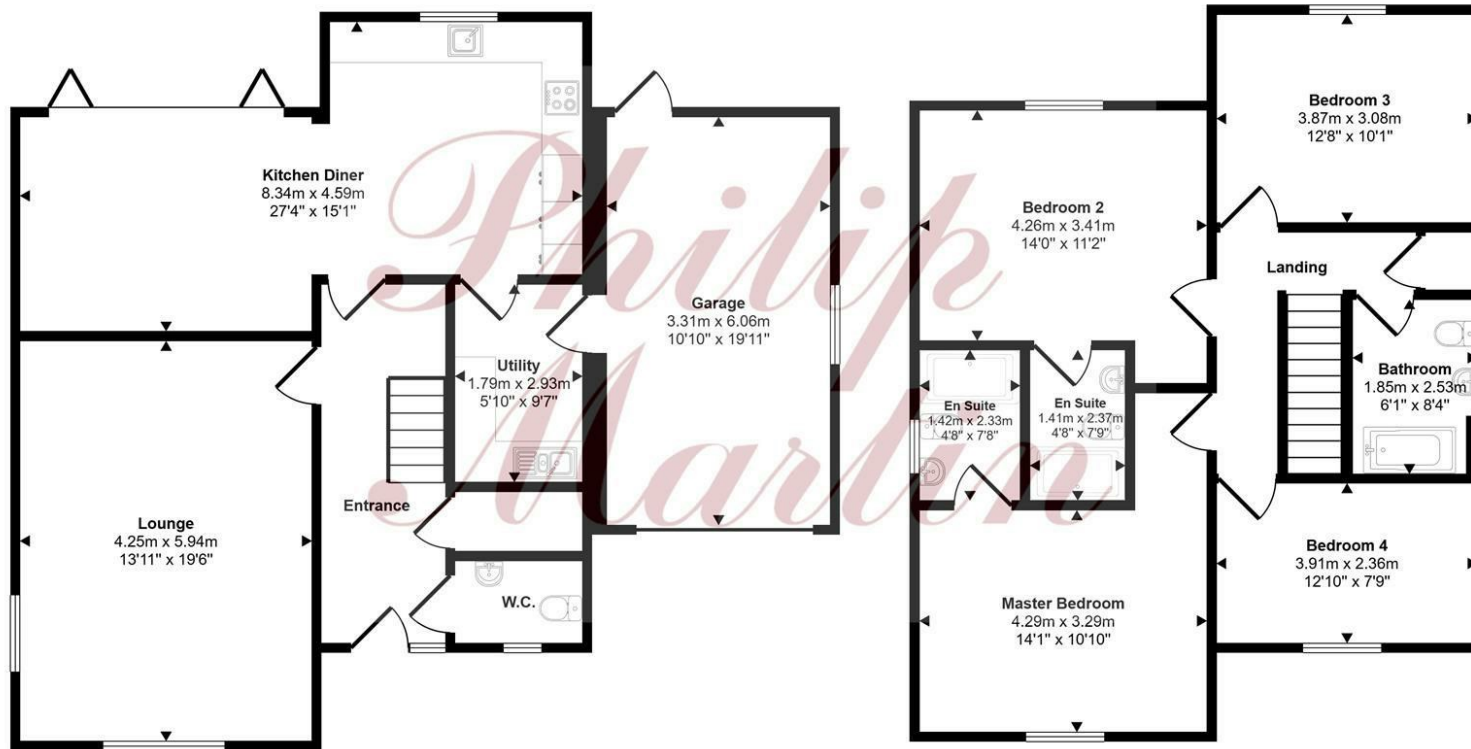
VIEWING

Strictly by Appointment through the Agents Philip Martin, 9 Cathedral Lane, Truro, TR1 2QS. Telephone: 01872 242244 or 3 Quayside Arcade, St. Mawes, Truro TR2 5DT. Telephone 01326 270008.

DIRECTIONS

Proceeding into the village of Leedstown along the B3302 Fraddam Road from Helston turn right into Trenerth Road. Follow this road and after a short distance the turning into Deans View will be found on the right hand side where a Philip Martin sale board has been erected.

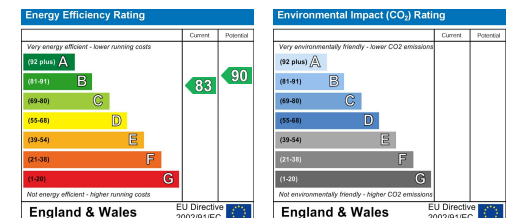
Approx Gross Internal Area
175 sq m / 1888 sq ft



Ground Floor
Approx 98 sq m / 1058 sq ft

First Floor
Approx 77 sq m / 830 sq ft

This floorplan is only for illustrative purposes and is not to scale. Measurements of rooms, doors, windows, and any items are approximate and no responsibility is taken for any error, omission or mis-statement. Icons of items such as bathroom suites are representations only and may not look like the real items. Made with Made Snappy 360.







PHILIP MARTIN

Truro 01872 242244 St Mawes 01326 270008 www.philip-martin.co.uk

Philip Martin

ESTATE AGENTS, CHARTERED SURVEYORS, VALUERS & AUCTIONEERS

Philip Martin