



SAFFRON MEADOW
CUSCARNE

TR4 8RW

Philip Martin

ESTATE AGENTS, CHARTERED SURVEYORS, VALUERS & AUCTIONEERS

Philip Martin



SAFFRON MEADOW CUSGARNE TR4 8RW

DETACHED DORMER STYLE BUNGALOW IN
OUTSTANDING LOCATION

Situated on the edge of Cusgarne village in an elevated position with commanding views over the surrounding countryside.

A beautifully presented property with period features including high ceilings and large windows providing plenty of natural light and far reaching views.

Approached via a private lane this home enjoys a high degree of privacy and seclusion.

GUIDE PRICE £650,000

Philip Martin

PHILIP MARTIN

9 Cathedral Lane, Truro, Cornwall, TR1 2QS

Truro: 01872 242244 **St Mawes:** 01326 270008

E: sales@philip-martin.co.uk

www.philip-martin.co.uk



The particulars are issued on the understanding that all negotiations are conducted through Philip Martin who for themselves or for the Vendor whose agents they are, give notice that:

(a) Whilst every care has been taken in preparation of these particulars, their accuracy is not guaranteed, and they do not constitute any part of an offer or contract. Any intended purchaser must satisfy himself by inspection or otherwise as to the correctness of each of the statements contained in these particulars.

(b) They do not accept liability for any inaccuracy in these particulars nor for any travelling expenses incurred by the applicants in viewing properties that may have been let, sold or withdrawn.

THE PROPERTY

Saffron Meadow is a detached period dormer bungalow situated in a glorious location with views towards Carn Marth. The property has been greatly improved during their ownership offering light and spacious three/four bedroom accommodation which incorporates a wonderful hall, lounge (bed 4), open plan kitchen/dining room, bathroom and utility. Upstairs the master bedroom with en-suite also enjoys magnificent views to the front. The property benefits from marvellous high ceilings throughout. The gardens of approx a quarter of an acre are gently sloping with parking for several vehicles.

LOCATION

Approximately 12 minutes by car to the north east lies the city of Truro which has a wide range of facilities including banks, shops and supermarkets plus the main line rail link to London Paddington. Truro hospital at Trelisk is 10 - 15 minutes away depending on traffic. Falmouth and the Carrick Roads are 15 minutes by car from Cusgarne and offer fantastic facilities for sailing enthusiasts with marinas and deep water moorings.

Local rail travel to Truro and Falmouth is accessed from Perranwell Station which is 5 minutes from Cusgarne.

Cusgarne is a thriving community with an excellent primary school and a well known farm shop just along the road at Cusgarne Organic farm. With the neighbouring village of Frogpool which has a public house and the village hall just half a mile away. The Bissoe Cycle Trail, one mile away from the property, goes from Devoran all the way to Portreath on the north coast following the old mineral tramway that used to transport copper and tin to the old port at Devoran.

Children residing in Cusgarne typically go on to either Richard Lander School in Truro or Redruth School. A dedicated school bus service runs from Cusgarne to Richard Lander School, offering convenient transport for local pupils.

In greater detail the accommodation comprises (all measurements are approximate):

GROUND FLOOR

ENTRANCE HALLWAY

When entering the property you are greeted by a spacious hallway extending to a foyer area at the rear of the property where the staircase is situated. Engineered oak flooring. Wall mounted radiator. Two ceiling mounted lights. Skirtings. Door leading to:-

LOUNGE

4.50 x 3.55 (14'9" x 11'7")

A light and bright reception room with fantastic views over the surrounding farmland through large double glazed windows. Built in wood burner with polished granite hearth. Original floor boards. Four wall mounted lights. Skirting and coving. Radiator. The lounge also represents an opportunity for a fourth bedroom if required.



KITCHEN/DINING ROOM

4.59 x 6.72 (15'0" x 22'0")

A large well proportioned room ideal for entertaining and family living. Large double glazed windows to the south and west aspects and doors opening to the patio. An array of base level units with built-in-double oven, hob and stainless steel extractor fan. Island unit housing stainless steel sink with mixer tap, dishwasher and additional storage. Space for large fridge freezer. Engineered oak flooring. Numerous ceiling spotlights. Single ceiling mounted light. Skirtings and coving.

BEDROOM 2

4.47 x 2.91 (14'7" x 9'6")

Double bedroom with double glazed window to the north aspect overlooking green pastures. Built in bookshelf. Ceiling mounted light. Carpeted flooring. Wall mounted radiator. Skirtings.

BATHROOM

3.32 x 2.95 (10'10" x 9'8")

A generous bathroom with window to the side enjoying views over the surrounding countryside. A white suite with w.c. freestanding bath, walk in shower, wash hand basin and heated towel rail. Built in cupboard.

Philip Martin



BEDROOM 3

3.56 x 2.97 (11'8" x 9'8")

Double bedroom with double glazed window to the south aspect. Engineered oak flooring. Single ceiling mounted light. Wall mounted radiator. Skirtings. Door leading to the parking area.

UTILITY ROOM

4.62 x 1.35 (15'1" x 4'5")

With central heating boiler, space and plumbing for washing machine and tumble dryer. Door to rear garden.

FIRST FLOOR

LANDING

A large, bright and airy space. Numerous storage cupboards. Two double glazed velux windows. Carpeted flooring. Skirting. Door leading to:-

MASTER BEDROOM

6.19 x 3.56 (20'3" x 11'8")

A very large double bedroom suite with fabulous views over the garden and valley beyond. Large double glazed dormer window. Built in wardrobes and storage. Two wall mounted radiators. Loft access point. Two wall mounted lights. Single ceiling mounted light. Carpeted flooring. Skirtings. Door leading to:-

EN-SUITE

3.10 x 1.64 (10'2" x 5'4")

A modern shower suite. Large walk in tiled shower, WC and pedestal sink basin. Tiled flooring. Large Velux window to the north aspect.

OUTSIDE

Saffron Meadow enjoys a very large manicured lawn garden extending to the front of the property which enjoys far reaching views over the agricultural farmland beyond. An array of mature shrubs and bushes border the garden including rhododendrons and hydrangeas. To the rear of the property is a decking area ideal for entertaining and a further lawned area. A large wooden outbuilding makes an ideal potting shed for those with green fingers or further storage. The boundary of the property is marked by a traditional stone wall dappled with mature trees. There is a gravelled hard standing area providing parking for numerous cars, with potential for caravan or boat storage. There is also a cellar.

SERVICES

Oil fired heating. Mains electricity and water. Private drainage.

N.B

The electrical circuit, appliances and heating system have not been tested by the agents.

COUNCIL TAX

Council Tax Band: E

EPC Band: D

TENURE

Freehold.

DIRECTIONS

The property can be found just behind the primary school where a Philip Martin board has been erected.

VIEWING

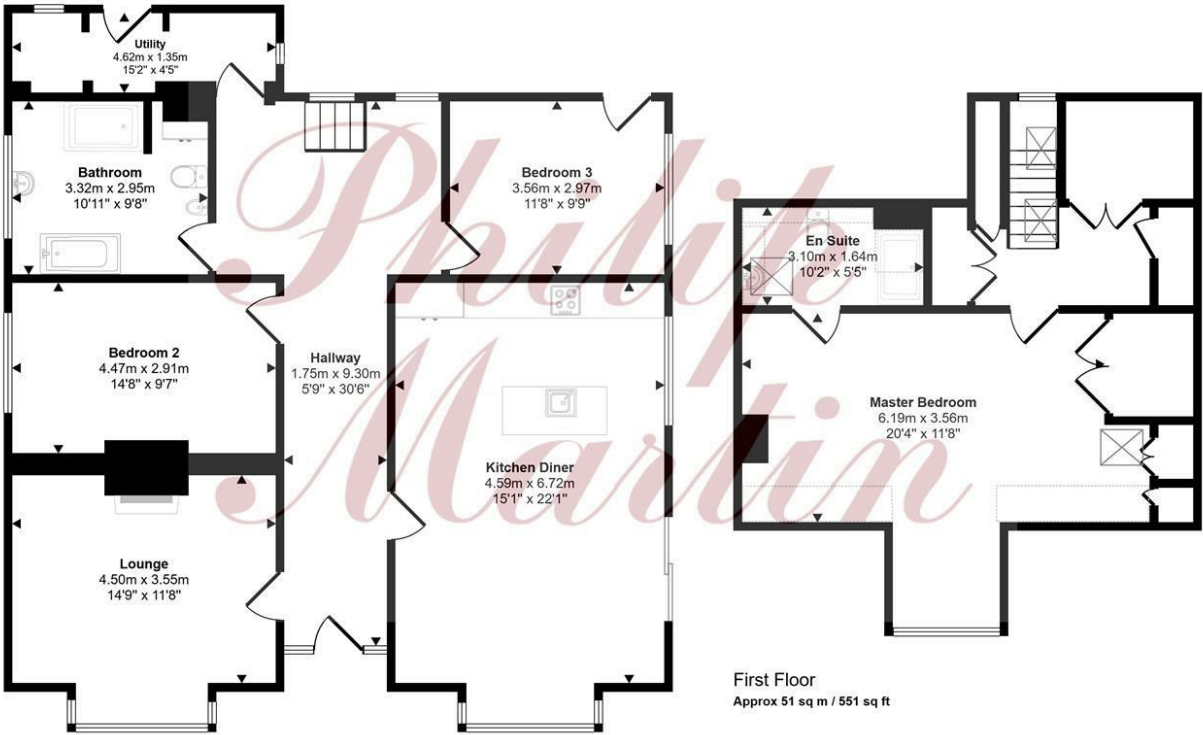
Strictly by Appointment through the Agents Philip Martin, 9 Cathedral Lane, Truro, TR1 2QS. Telephone: 01872 242244 or 3 Quayside Arcade, St. Mawes, Truro TR2 5DT. Telephone 01326 270008.

DATA PROTECTION

We treat all data confidentially and with the utmost care and respect. If you do not wish your personal details to be used by us for any specific purpose, then you can unsubscribe or change your communication preferences and contact methods at any time by informing us either by email or in writing at our offices in Truro or St Mawes.



Approx Gross Internal Area
170 sq m / 1831 sq ft

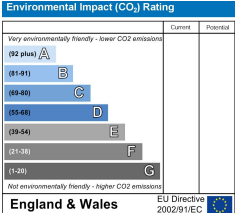
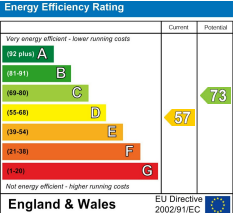


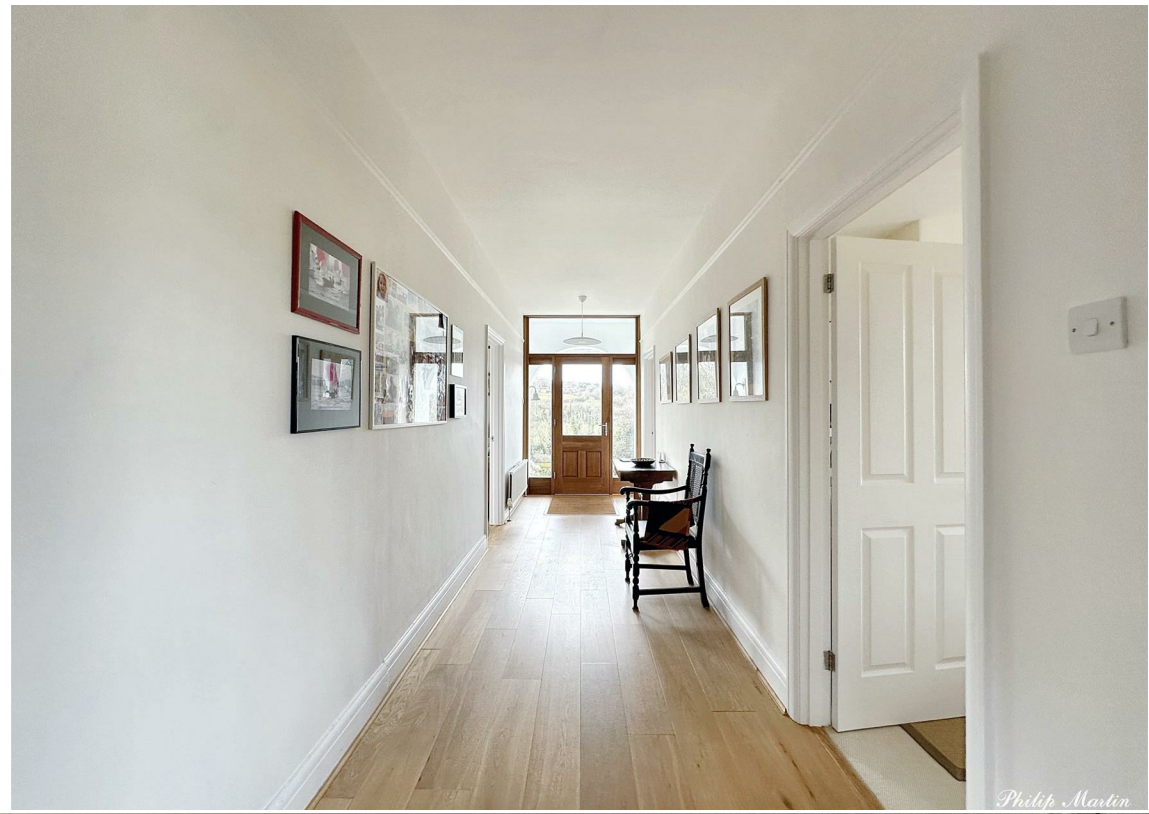
First Floor
Approx 51 sq m / 551 sq ft

Ground Floor
Approx 119 sq m / 1280 sq ft

Denotes head height below 1.5m

This floorplan is only for illustrative purposes and is not to scale. Measurements of rooms, doors, windows, and any items are approximate and no responsibility is taken for any error, omission or mis-statement. Icons of items such as bathroom suites are representations only and may not look like the real items. Made with Made Snappy 360.







PHILIP MARTIN

Truro 01872 242244 St Mawes 01326 270008 www.philip-martin.co.uk

Philip Martin

ESTATE AGENTS, CHARTERED SURVEYORS, VALUERS & AUCTIONEERS

Philip Martin