



**76 Kitson Way, Harlow, CM20 1FG**  
**£99,000**

40% Share

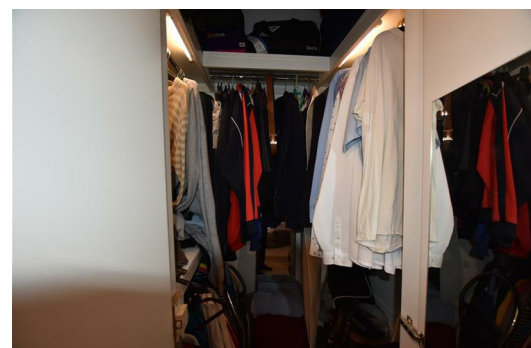
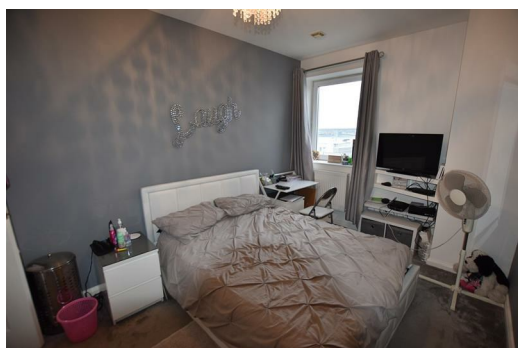
Insight Estates are delighted to offer this 7th floor two bedroom apartment for sale in the heart of Harlow town centre. Property benefits from a concierge and modern style throughout. Electric boiler with radiators. Close to local amenities being in centre of town and close to mainline station enabling access to London Liverpool Street.

Rent on other share of 60% - £315.61 per month

Service charge - £142.21 per month

Council Tax band C

Car parking space if required at £13.54 per week



Hall

Double radiator, oak flooring flooring, intercom with three pendant light ceiling and smoke detector, secure hardwood entrance door, double door to Storage cupboard.

3'5" x 7'5" (1.03m x 2.25m)

Storage cupboard.

Master Bedroom

13'9" x 8'11" (4.19m x 2.72m)

UPVC window to rear, fitted with a range of wardrobes comprising two walk-in wardrobes, double radiator, fitted carpet, double door to Storage cupboard.

Storage cupboard.

Bedroom 2

13'9" x 9'4" (4.19m x 2.84m)

UPVC double glazed window to rear, fitted double wardrobe(s), double radiator, fitted carpet, double door to Storage cupboard.

Storage cupboard.

Bathroom

Heated towel rail.

Lounge

18'11" x 16'6" (5.77m x 5.04m)

Window to rear, two windows to side, two double radiators, oak flooring with three pendant light, door to:

Kitchen

13'9" x 7'7" (4.19m x 2.31m)

Window to rear, oak flooring.

Energy Efficiency Rating		
	Current	Potential
Very energy efficient - lower running costs		
(92 plus) A		
(81-91) B		
(69-80) C		
(55-68) D		
(39-54) E		
(21-38) F		
(1-20) G		
Not energy efficient - higher running costs		
England & Wales EU Directive 2002/91/EC		

Environmental Impact (CO <sub>2</sub> ) Rating		
	Current	Potential
Very environmentally friendly - lower CO <sub>2</sub> emissions		
(92 plus) A		
(81-91) B		
(69-80) C		
(55-68) D		
(39-54) E		
(21-38) F		
(1-20) G		
Not environmentally friendly - higher CO <sub>2</sub> emissions		
England & Wales EU Directive 2002/91/EC		



VAT No: 916 0815 34

**Insight Estates**  
Matheson House, 2a Cambridge Road  
Sawbridgeworth, Hertfordshire, CM21 9BS  
T: 01279 722944  
e: sales@letsandsales.com  
w: www.insightestates.com