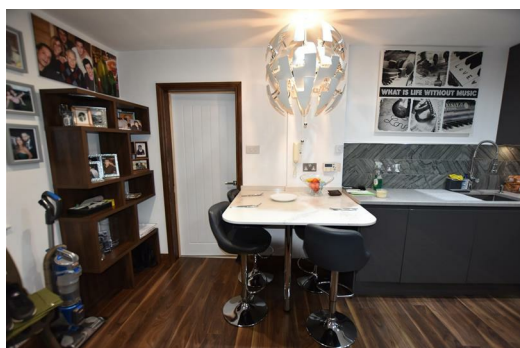




**31 vintage court Cambridge Road, Ware, SG11 1SA**  
**£190,000**

We are delighted to offer this one bed apartment in the heart of Puckeridge. The property consists of living room/diner/kitchen, large bedroom with walk in bathroom. There is a range of built-in wardrobes and storage cupboard. The property is finished to the highest standard with granite worktops and marble bathroom. This would make an ideal lock up and go, for somebody who wishes to live just a few months of the year in England.



**lounge kitchen**

15'3" x 16'1" (4.66m x 4.89m)

Fitted with a matching base and eye level units with granite, matching breakfast bar, stainless steel sink, integrated fridge/freezer and automatic washing machine, fitted electric fan assisted oven, built-in electric hob with extractor hood, window to rear, electric storage heater, laminate flooring, door to:

**Bedroom 1**

15'3" x 15'3" (4.66m x 4.66m)

Window to rear, built-in wardrobe(s), electric storage heater, fitted carpet, door to Storage cupboard.

Storage cupboard.

**Bathroom**

Fitted with three piece suite with deep panelled bath and vanity wash hand basin, WC with hidden cistern, tiling, extractor fan, marble flooring.

Energy Efficiency Rating		
	Current	Potential
Very energy efficient - lower running costs		
(92 plus) A		
(81-91) B		
(69-80) C		
(55-68) D		
(39-54) E		
(21-38) F		
(1-20) G		
Not energy efficient - higher running costs		
England & Wales		
EU Directive 2002/91/EC		

Environmental Impact (CO <sub>2</sub> ) Rating		
	Current	Potential
Very environmentally friendly - lower CO <sub>2</sub> emissions		
(92 plus) A		
(81-91) B		
(69-80) C		
(55-68) D		
(39-54) E		
(21-38) F		
(1-20) G		
Not environmentally friendly - higher CO <sub>2</sub> emissions		
England & Wales		
EU Directive 2002/91/EC		



VAT No: 916 0815 34

**Insight Estates**

Matheson House, 2a Cambridge Road  
Sawbridgeworth, Hertfordshire, CM21 9BS

T: 01279 722944  
e: sales@letsandsales.com

w: www.insightestates.com