

3 Eagle Close  
Weldon  
Corby  
Northamptonshire  
NN17 3FD

£500,000

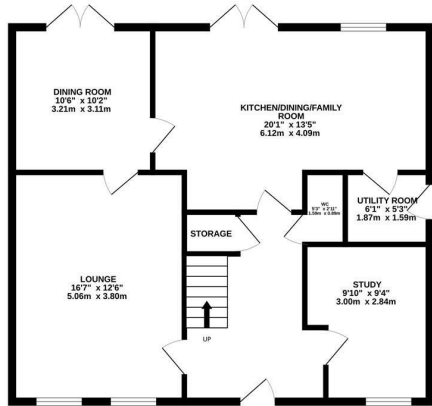


OSCAR JAMES

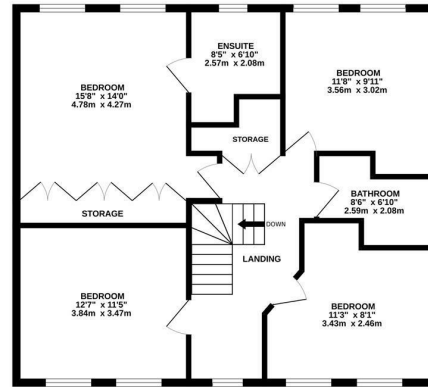
...expect excellence

# FLOOR PLANS

GROUND FLOOR  
821 sq.ft. (76.3 sq.m.) approx.



1ST FLOOR  
821 sq.ft. (76.3 sq.m.) approx.



TOTAL FLOOR AREA: 1642 sq.ft. (152.6 sq.m.) approx.

Whilst every attempt has been made to ensure the accuracy of the floorplan contained here, measurements of doors, windows, rooms and any other items are approximate and no responsibility is taken for any error, omission or mis-statement. This plan is for illustrative purposes only and should be used as such by any prospective purchaser. The services, systems and appliances shown have not been tested and no guarantee as to their operability or efficiency can be given.  
Made with Metropix ©2023



## AT A GLANCE...



The living room offers a good degree of space, and has separate dining room off from it



An amazing, high degree of quality finish kitchen/diner, with access to utility room



Four double bedrooms, with the master benefiting from built-in wardrobes and ensuite



Both the family bathroom, and master ensuite both boast having bathtub AND individual shower's



The large rear garden space is both laid to lawn, with patio spaces great for entertaining



Off-road parking for multiple vehicles with large, detached, double garage



## WHAT'S GREAT?

Stunning, spacious, four bedroom detached family home sits on Eagle Close, within the heart of the sought-after Priors Hall Park residential area.

This well presented home comes finished to a modern-neutral spec. and offers space in abundance as well as a high degree of versatility given room size, and layout.

Upon entry you are greeted with a sizeable entrance hall which gives access to downstairs WC. Off from the hall there is a study, which is a very versatile space that could be used for multiple purposes. To the ground floor there is also a living room, which leads on to separate dining room. There is also a kitchen/diner to the rear which is a real stand-out space, given its size, feel and overall high-quality finish making it a great space for entertaining. There is a good level of storage here, space for appliances, and further benefits from access to a utility room for added convenience.

Upstairs, there is a well-spaced out landing area which gives access to four DOUBLE bedrooms. This impressive house offers plenty of room in all of the bedroom, and has a

family bathroom suite which boasts both bath tub and individual shower unit. To the master bedroom there is a quadruple built in wardrobe space offering plenty of storage space, and an en-suite, which again lie the main bathroom, it offers both bathtub, and shower unit, which is an extremely rare find.

Externally, this attractive property sits on a street row which offers a good degree of privacy. There is a large rear garden which offers both lawned and patio areas, making it a fantastic outside space to enjoy. There is plenty of off-road parking on offer here, sitting in front of the impressively sized double, detached garage.

This amazing property has so much to offer, and must be viewed to truly appreciate it.

Get in touch with the team at Oscar James, Corby, for further details or to arrange a viewing.

Tenure: Freehold  
Council Tax: E  
EPC Rating: B

...expect excellence



# SELLER'S SECRET

The street is a private row, which is ideal as it is so pleasant and quiet being off from any main road. We love the house itself, and the space has been amazing for us whilst being here. The study downstairs is absolutely perfect for all 'Work-from-home' needs which has suited us so well.



*Why we like it....*

This property sits on a fantastic size of plot, in a very sought after area being in Priors Hall Park. All four of the bedrooms are doubles which is a very rare find, and even rarer; both the bathroom AND master ensuite offer both bathtub and standalone shower unit.

*To buy or not to buy....*

**OSCAR JAMES**

13 New Post Office Square | Corby | NN17  
1PB  
01536 400900  
www.oscar-james.com

---

---

---

---

---