

13 Sarrington Road
Corby
Northamptonshire
NN17 1JZ

£230,000

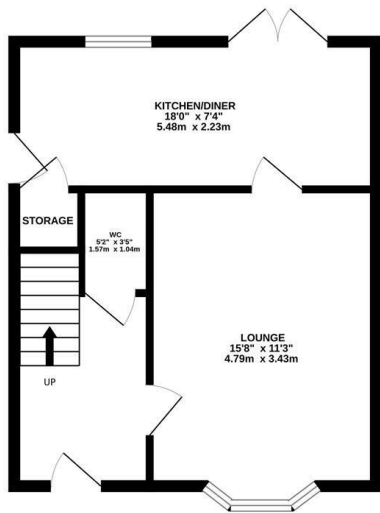


OSCAR JAMES

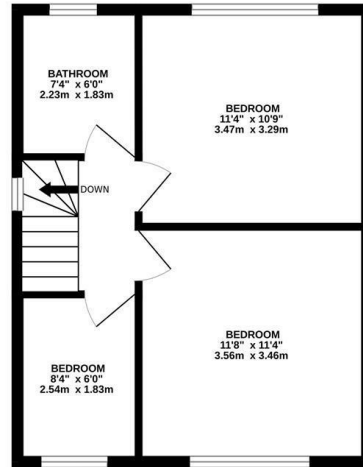
...expect excellence

FLOOR PLANS

GROUND FLOOR
401 sq.ft. (37.3 sq.m.) approx.



1ST FLOOR
391 sq.ft. (36.3 sq.m.) approx.



TOTAL FLOOR AREA : 792 sq.ft. (73.5 sq.m.) approx.

Whilst every attempt has been made to ensure the accuracy of the floorplan contained here, measurements of doors, windows, rooms and any other items are approximate and no responsibility is taken for any error, omission or mis-statement. This plan is for illustrative purposes only and should be used as such by any prospective purchaser. The services, systems and appliances shown have not been tested and no guarantee as to their operability or efficiency can be given.

Made with Metropix ©2023



AT A GLANCE...



Large lounge with bay window



Kitchen/diner with integrated appliances



Three bedrooms



Family bathroom and additional downstairs WC



Private, enclosed rear garden



On street parking



WHAT'S GREAT?

"Newly Refurbished, Modernised Through-out" Presented to the market in incredible condition is this three bedroom semi-detached home. Situated in the popular Lloyds area of Corby this home has been renovated throughout by the current owners and must be viewed to be fully appreciated.

Stepping through the front door will bring you into the entrance hall with stairs ascending to the first floor landing, a door to a newly added downstairs WC and another door providing access to the lounge with feature media wall and bay window. The fitted kitchen/diner has matching wall mounted and base level units with roll-top work-surface over, one and a half bowl stainless steel sink and drainer with tiling to splashback areas, integrated appliances include 4-ring gas hob with cooker hood over, fridge/freezer, washing machine and dishwasher.

To the first floor are the three bedrooms, two of which are double bedrooms and the third a good sized single room. The family bathroom comprises WC, vanity wash hand basin, 'P'-shape bath with shower over, chrome heated towel rail with matching floor and wall tiles. A loft hatch complete with fitted ladder provides access to the fully boarded loft space.

Externally, the front of the property is a laid with gravel with footpath leading to the front door and another footpath leading to the side gate which provides access to the fully enclosed private rear garden which is mainly laid to lawn with patio area immediate from the property.

Call sole selling agents Oscar James to book your viewing on this ready to move into home!

...expect excellence



SELLER'S SECRET

This has been the perfect first home for us but we have the opportunity to purchase our dream home which we can't pass up!



Why we like it....

Having been fully refurbished throughout this three bedroom semi-detached home is ready to move in, just add your own furniture!

To buy or not to buy....

OSCAR JAMES

13 New Post Office Square | Corby | NN17

1PB

01536 400900

www.oscar-james.com
