

Silvester Road
Weldon
Corby
NN17 3LZ

£400,000

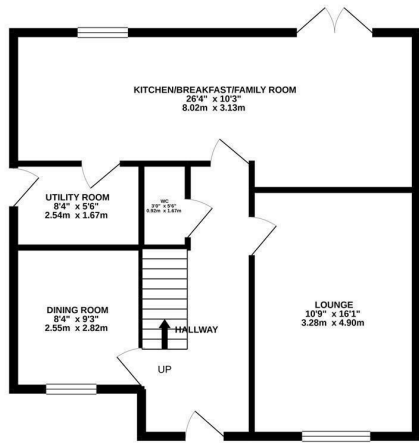


OSCAR JAMES

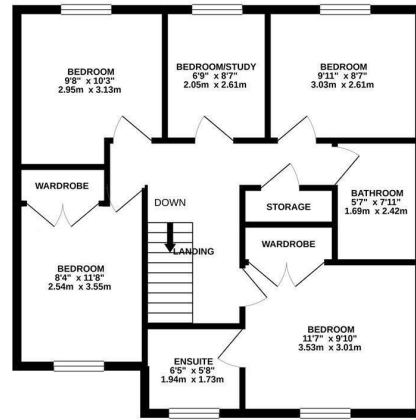
...expect excellence

FLOOR PLANS

GROUND FLOOR
668 sq.ft. (62.1 sq.m.) approx.



1ST FLOOR
668 sq.ft. (62.1 sq.m.) approx.



TOTAL FLOOR AREA: 1336 sq.ft. (124.1 sq.m.) approx.

Whilst every attempt has been made to ensure the accuracy of the floorplan contained here, measurements of doors, windows, rooms and any other items are approximate and no responsibility is taken for any error, omission or mis-statement. This plan is for illustrative purposes only and should be used as such by any prospective purchaser. The services, systems and appliances shown have not been tested and no guarantee as to their operability or efficiency can be given.
Made with Metropix ©2020



AT A GLANCE...



Light & airy living room



Spacious kitchen/diner/family room



Five bedrooms



Multiple options



Beautifully landscaped garden



Off road parking & garage



WHAT'S GREAT?

"Enviably Plot & Location!" Occupying a generous plot, this attractive stone-built home has been beautifully maintained by the current owners and offers versatile accommodation across two floors. Featuring an impressive open-plan kitchen, dining and living space, two additional reception rooms and five bedrooms, the property is ideally suited to modern family living and entertaining.

The welcoming entrance hall provides access to two reception rooms, a stylish downstairs cloakroom and the stunning full-width kitchen/family room. The spacious living room enjoys a feature fireplace and front-facing aspect, while the second reception room is a versatile space, adaptable for many uses.

A real highlight of the property is the beautifully fitted kitchen, which spans the full rear elevation. Offering a range of units, integrated appliances, a breakfast bar and ample space for dining and relaxed seating, it creates a superb social and entertaining area. A separate utility room adjoins the kitchen and benefits from external access.

To the first floor are five bedrooms (four doubles) two with fitted wardrobes, along with a further single bedroom. The principal bedroom benefits from a stylish en-suite shower room, while a contemporary family bathroom serves the remaining bedrooms.

Occupying one of the larger plots within the development, the thoughtfully landscaped rear garden features two sizeable patio areas, a raised deck with inset LED lighting and a generous lawn garden, enjoying plentiful sunlight it is absolutely a stand-out feature of this wonderful home!

To the front, the property is set back from the road behind a low-maintenance garden with box hedging. A driveway provides off-road parking and leads to the garage.

This exceptional village home offers an outstanding balance of space, flexibility and style, and must be viewed to be fully appreciated.

...expect excellence



SELLER'S SECRET

The garden is a great space, which we've done a lot to over the years of being here, it catches the sun really well and is great for entertaining!



Why we like it....

A wonderfully spacious home, which is ideal for families given that it has 5 bedrooms and multiple reception rooms!

OSCAR JAMES

1a Spencer Court | Corby | NN17 1BH
01536 400900
www.oscar-james.com

To buy or not to buy....
