

Wolfe Close
Kettering
NN15 5DA

£1,300

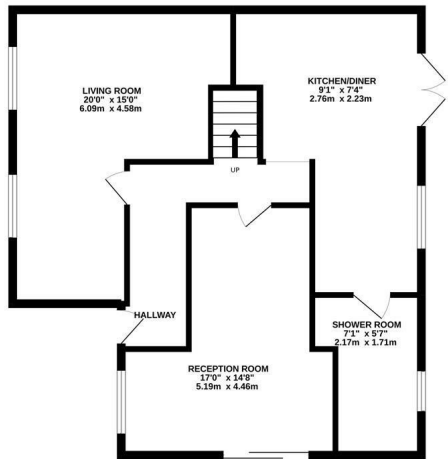


OSCAR JAMES

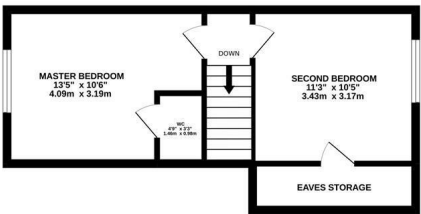
...expect excellence

FLOOR PLANS

GROUND FLOOR
765 sq.ft. (71.1 sq.m.) approx.



1ST FLOOR
326 sq.ft. (30.3 sq.m.) approx.



TOTAL FLOOR AREA: 1091 sq.ft. (101.4 sq.m.) approx.
Whilst every attempt has been made to ensure the accuracy of the floorplan contained here, measurements of doors, windows, rooms and any other items are approximate and no responsibility is taken for any error, omission or mis-statement. This plan is for illustrative purposes only and should be used as such by any prospective purchaser. The services, systems and appliances shown have not been tested and no guarantee as to their operability or efficiency can be given.
Made with Metropix v2022



AT A GLANCE...



custom text 1



custom text 4



custom text 2



custom text 5



custom text 3



custom text 6



WHAT'S GREAT?

Nestled in the sought-after Ise Lodge estate in Kettering, this charming semi-detached dorma bungalow situated on a corner plot, is the making of a perfect family home.

The location is particularly advantageous, being close to local amenities, transport links, and reputable schools, making it an ideal choice for families and commuters alike.

The property offers a large living area, spacious kitchen /diner with built in appliances, three well-proportioned double bedrooms and two bathrooms spread across both ground and first floors.

A feature of this property is the extensive panoramic garden, perfect for outdoor dining and entertaining, The corner plot enhances the sense of privacy and space, making it a perfect retreat.

For those with vehicles, the property includes off-road parking for one vehicle, along with a

single garage to the rear.

Available NOVEMBER

Council Tax Band: C
EPC: C

...expect excellence



SELLER'S SECRET

As a three generational family this home has worked very well for us, Mum has had use of the ground floor bedroom and the side garden to make her own and it has been lovely for a young daughter to play outside in the garden safely. The time is right for a change and we have therefore decided to sell.



Why we like it....

We love this home! Great plot and still with loads of potential! This one will go quickly so do please call asap!

OSCAR JAMES

1 Newland Street | Kettering | NN16 8JH
01536 415777
www.oscar-james.com

To buy or not to buy....
