



26 Virginia Crescent,  
Burton Latimer, NN15 5GA

OSCAR JAMES

£360,000

ESTATE AGENTS

# The Property in Brief...

*This STUNNING four bedroomed detached property, which is offered to the market in turn-key condition in the lovely town of Burton Latimer, close to all the local amenities.*

*The property itself is presented in immaculate condition, with the ground floor accommodation comprising; entrance hall with beautiful \*\*polished floor tiles\*\*, good size lounge, useful WC and the stunning kitchen/diner which is spacious and fully equipped complete with French doors out to the garden.*

*Upstairs there are four well proportioned bedrooms and the well appointed family bathroom, the master bedroom benefits from ensuite facilities.*

*Outside the property has a lovely frontage with parking for two and the integral single garage which is part storage and part home office. To the rear is a generous sized garden complete with a patio area and lawn perfect for summer BBQ's.*

*Burton Latimer is a vibrant town that enjoys a real community spirit such as farmer's markets, lots of local eateries, hair and beauty salons, schooling and excellent transports links including two train stations just a 10/15 minute drive away with direct links to London.*

*To arrange to view this gorgeous home, please give Oscar James a call today.*

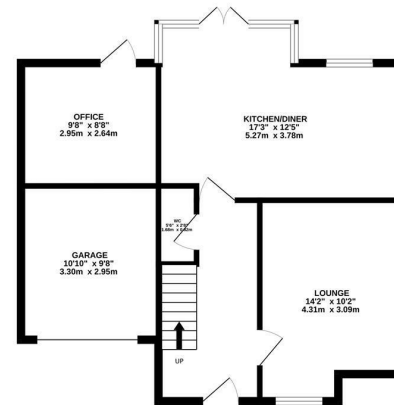


# Dimensions

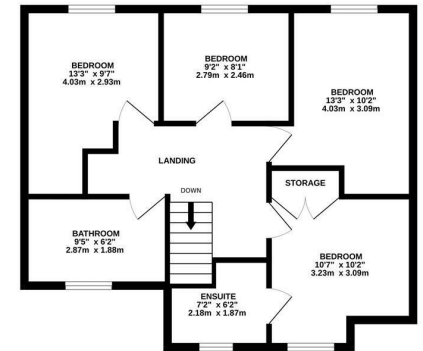
## What our vendors say...

*We have lived here since new and it has been a great home for us. We hope the new owner has as many happy memories here as we have!*

GROUND FLOOR  
617 sq.ft. (57.4 sq.m.) approx.

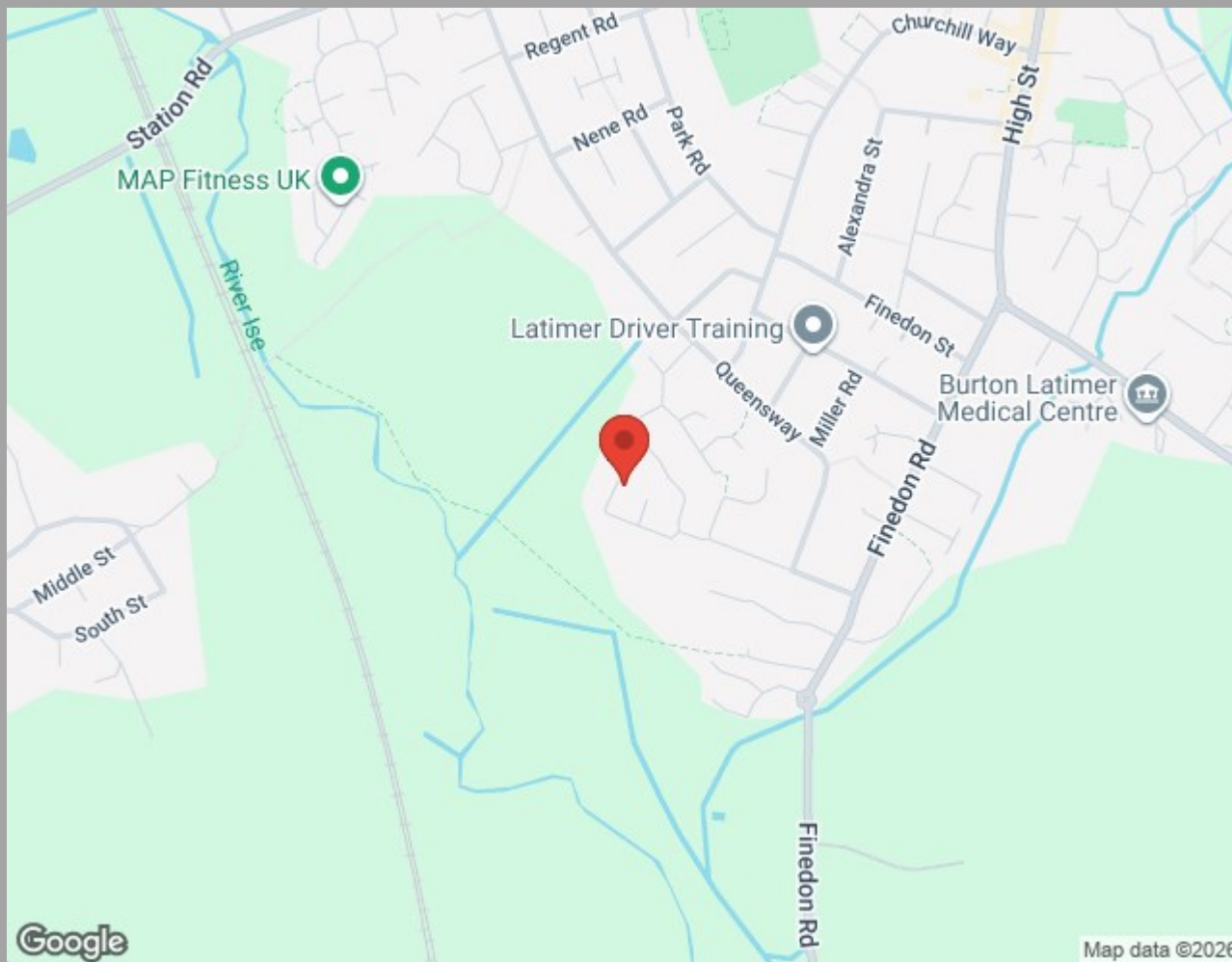


1ST FLOOR  
599 sq.ft. (55.7 sq.m.) approx.



TOTAL FLOOR AREA: 1217 sq.ft. (113.0 sq.m.) approx.

Whilst every attempt has been made to ensure the accuracy of the floorplan contained here, measurements of doors, windows, rooms and any other items are approximate and no responsibility is taken for any error, omission or mis-statement. This plan is for illustrative purposes only and should be used as such by any prospective purchaser. The services, systems and appliances shown have not been tested and no guarantee as to their operability or efficiency can be given.  
Made with Metropix ©2025



Find us at;  
45 High Street  
Burton Latimer, NN15 5LB

01536 722 222  
burton@oscar-james.com  
www.oscar-james.com  
Follow us on Facebook

Whilst every attempt has been made to ensure the accuracy of the floor plan and details contained here, measurements of doors, windows, rooms and any other items are approximate and no responsibility is taken for any error, omission, or mis-statement. This plan is for illustrative purposes only and should be used as such by any prospective purchaser. The services, systems and appliances shown have not been tested and have no guarantee as to their operability or efficiency can be given. Floor plan made with Metropix 2014. Fixtures and fittings may vary at point of sale.

