



23 Bird Street,
Burton Latimer, NN15 5NA

OSCAR JAMES

Price Guide £190,000

The Property in Brief...

**** NO ONWARD CHAIN ****

Charming two-bedroom end terrace character property, offering spacious and well-presented accommodation throughout.

The ground floor comprises a welcoming entrance hall providing access to a separate lounge, separate dining room and fitted kitchen, creating an ideal layout for both everyday living and entertaining. A convenient W/C completes the ground floor

Upstairs, the property benefits from two generous double bedrooms and a large shower room.

Externally, the home enjoys a highly private and well-sized rear garden featuring mature shrubs and established planting, offering a peaceful outdoor retreat. Additional benefits include a brick-built outbuilding and a summer house, providing excellent storage, workspace or leisure potential.

A wonderful character home suited to first-time buyers, downsizers, or investors alike.

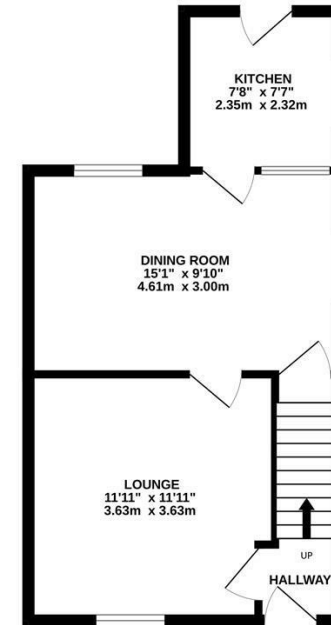


Dimensions

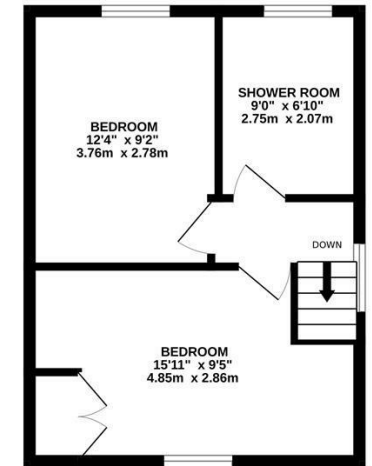
What our vendors say...

We have loved living in this charming home, especially the private garden and spacious layout, which has been perfect for both relaxing and entertaining.

GROUND FLOOR
387 sq.ft. (36.0 sq.m.) approx.

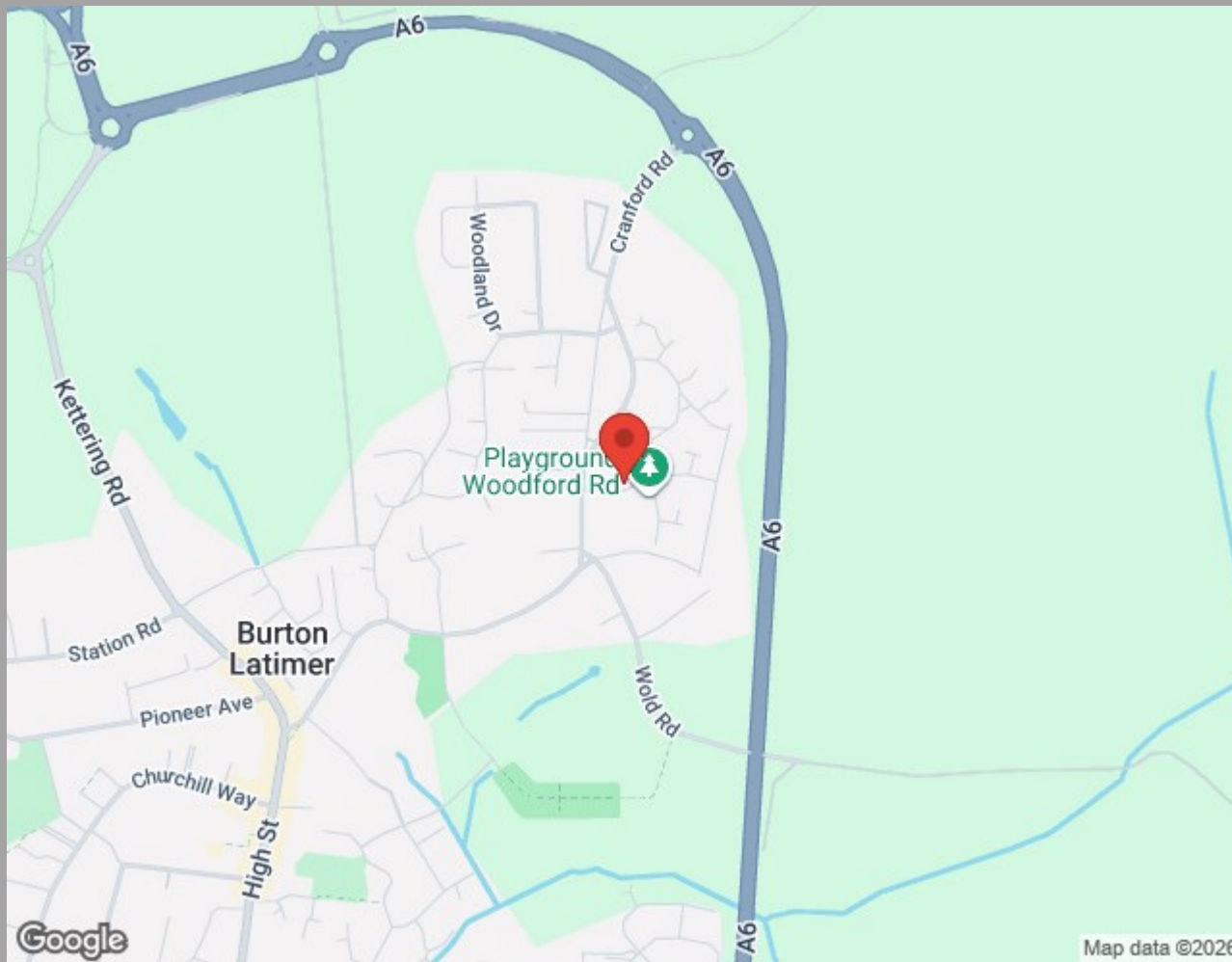


1ST FLOOR
346 sq.ft. (32.2 sq.m.) approx.



TOTAL FLOOR AREA: 733 sq.ft. (68.1 sq.m.) approx.

Whilst every attempt has been made to ensure the accuracy of the floorplan contained here, measurements of doors, windows, rooms and any other items are approximate and no responsibility is taken for any error, omission or mis-statement. This plan is for illustrative purposes only and should be used as such by any prospective purchaser. The services, systems and appliances shown have not been tested and no guarantee as to their operability or efficiency can be given.
Made with Metropix ©2026



Find us at;
45 High Street
Burton Latimer, NN15 5LB

01536 722 222
burton@oscar-james.com
www.oscar-james.com
Follow us on Facebook

Whilst every attempt has been made to ensure the accuracy of the floor plan and details contained here, measurements of doors, windows, rooms and any other items are approximate and no responsibility is taken for any error, omission, or mis-statement. This plan is for illustrative purposes only and should be used as such by any prospective purchaser. The services, systems and appliances shown have not been tested and have no guarantee as to their operability or efficiency can be given. Floor plan made with Metropix 2014. Fixtures and fittings may vary at point of sale.

