



5 Wold Road,
Burton Latimer, NN15 5PN

OSCAR JAMES

Offers Over £220,000

ESTATE AGENTS

The Property in Brief...

This delightful character cottage is tucked away in a sought-after town of Burton Latimer, offering charm and practicality in equal measure.

Step inside through the welcoming porch and you'll find a lounge filled with natural light, enhanced by elegant French doors that open out to the courtyard. A well-appointed kitchen with space for free standing appliances completes the downstairs accommodation.

Upstairs, a bright landing leads to two comfortable double bedrooms. The master bedroom benefits from built-in wardrobes, while the stylish family bathroom features both a bathtub and a separate walk-in shower. For added convenience, a fully boarded loft provides excellent additional storage space.

Outside, the property offers off-road parking and a low-maintenance courtyard garden — ideal for relaxing and enjoying quiet moments outdoors. Its enviable position enjoys countryside views, creating a wonderfully peaceful place to call home.

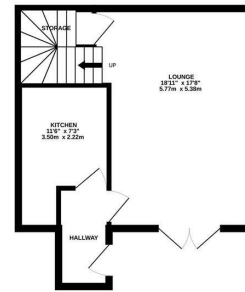
Please call Oscar James to book a viewing



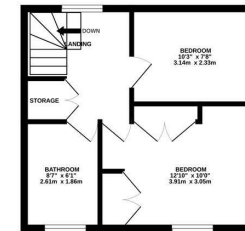
What our vendors say...

This has been a fantastic home for me. I have loved living her. I feel really privileged to live on the Wold. Neighbours are lovely and I miss the green spaces

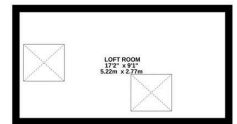
GROUND FLOOR
353 sq.ft. (32.8 sq.m.) approx.



1ST FLOOR
334 sq.ft. (31.0 sq.m.) approx.



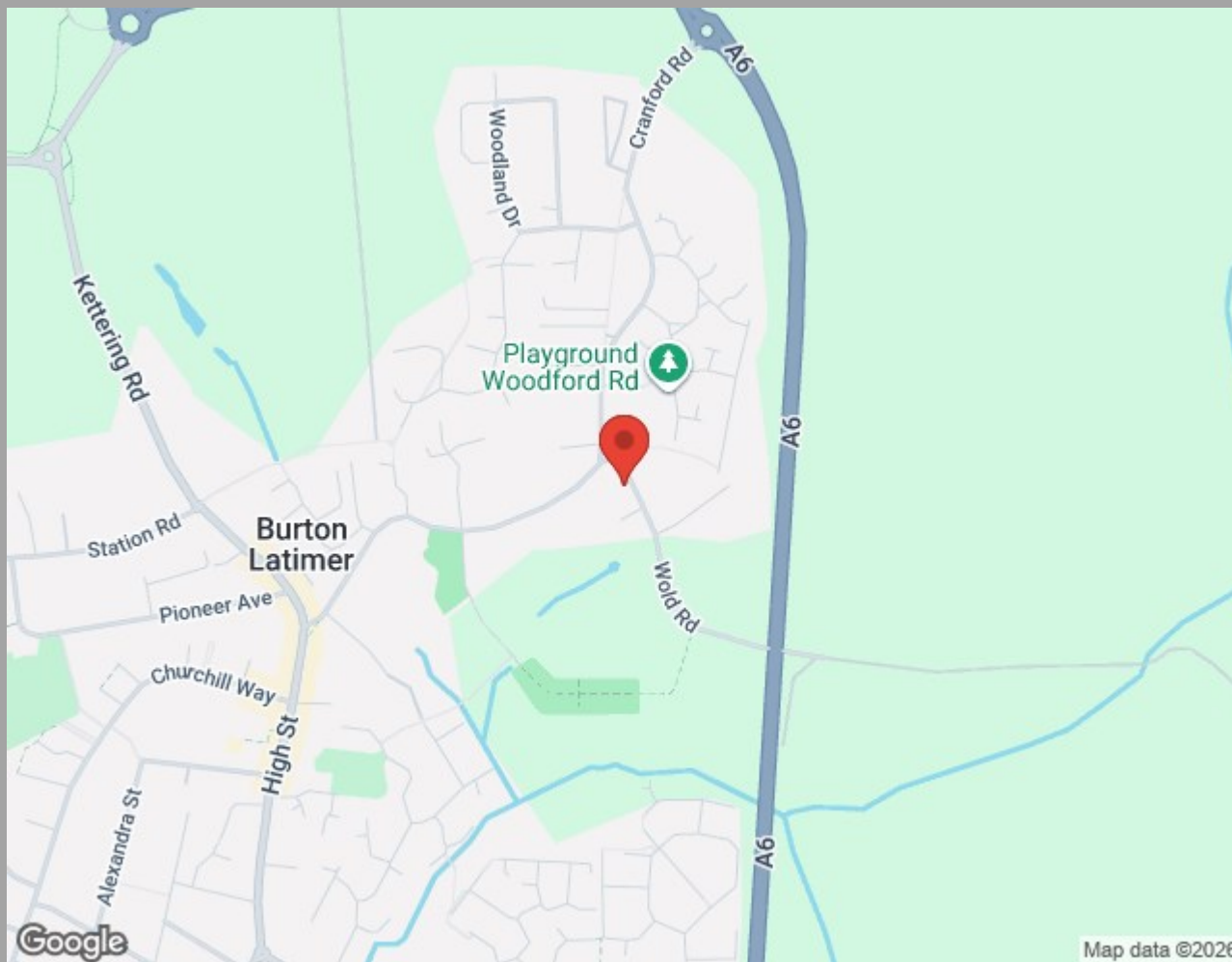
2ND FLOOR
156 sq.ft. (14.5 sq.m.) approx.



TOTAL FLOOR AREA : 843 sq.ft. (78.3 sq.m.) approx.

Whilst every attempt has been made to ensure the accuracy of the floorplan contained here, measurements of doors, windows, rooms and any other items are approximate and no responsibility is taken for any error, omission or mis-statement. This plan is for illustrative purposes only and should be used as such by any prospective purchaser. The services, systems and appliances shown have not been tested and no guarantee as to their operability or efficiency can be given.

Made with Metropix ©2025



Find us at;
45 High Street
Burton Latimer, NN15 5LB

01536 722 222
burton@oscar-james.com
www.oscar-james.com
Follow us on Facebook

Whilst every attempt has been made to ensure the accuracy of the floor plan and details contained here, measurements of doors, windows, rooms and any other items are approximate and no responsibility is taken for any error, omission, or mis-statement. This plan is for illustrative purposes only and should be used as such by any prospective purchaser. The services, systems and appliances shown have not been tested and have no guarantee as to their operability or efficiency can be given. Floor plan made with Metropix 2014. Fixtures and fittings may vary at point of sale.

