

5 Baldwin Drive
NN15 5ZJ

£375,000

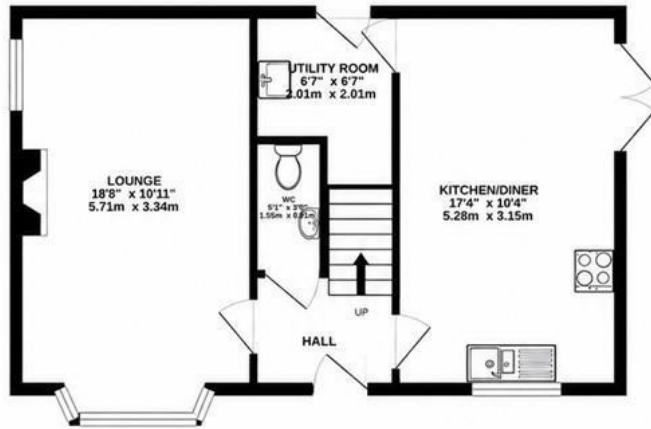


OSCAR JAMES

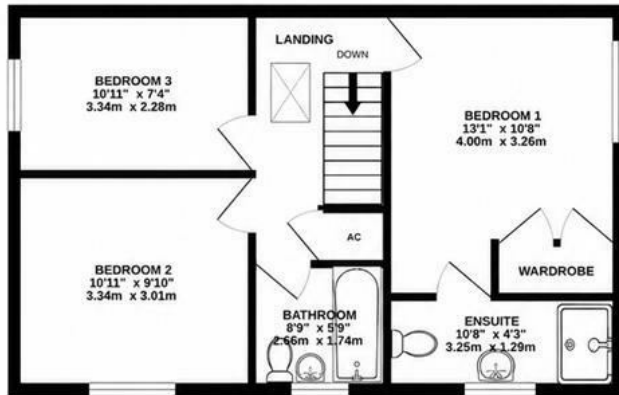
...expect excellence

FLOOR PLANS

GROUND FLOOR
488 sq.ft. (45.3 sq.m.) approx.



1ST FLOOR
483 sq.ft. (44.9 sq.m.) approx.



TOTAL FLOOR AREA : 971 sq.ft. (90.2 sq.m.) approx.

Whilst every attempt has been made to ensure the accuracy of the floorplan contained here, measurements of doors, windows, rooms and any other items are approximate and no responsibility is taken for any error, omission or mis-statement. This plan is for illustrative purposes only and should be used as such by any prospective purchaser. The services, systems and appliances shown have not been tested and no guarantee as to their operability or efficiency can be given.
Made with Metropix ©2020



AT A GLANCE...



Lounge with bay-window and wood burner



Kitchen diner with integrated appliances



3 Generous size bedrooms



Family bathroom, ensuite to master and W/C



South-west facing rear garden with extended patio



Private driveway, off road parking and single garage



WHAT'S GREAT?

Situated within the prestigious Grace Homes development in Burton Latimer, this exceptional three-bedroom detached family home occupies a desirable cul-de-sac position and has been finished to a high standard throughout. Boasting off-road parking, private driveway and a single garage. This beautifully presented property perfectly combines quality craftsmanship with modern family living.

Upon entering, the welcoming entrance hall provides access to a stunning light-filled lounge featuring a charming bay window and a cosy wood-burning stove, creating the perfect space to relax and unwind. To the rear of the property, the impressive kitchen/diner is fitted with integrated appliances, elegant stone worktops, and offers ample dining space for entertaining. Patio doors open directly onto the rear garden, while a separate utility room adds further practicality. The entire ground floor benefits from underfloor heating, enhancing both comfort and efficiency throughout. To finish the ground floor you have a W/C.

Upstairs, the property offers three generously sized bedrooms, including a superb principal bedroom complete with built-in wardrobes and a stylish en-suite shower room. A contemporary family bathroom serves the remaining bedrooms.

Externally, the secluded south-west facing rear garden enjoys plenty of afternoon and evening sunshine and features an extended patio seating area with the remainder mainly laid to lawn. There is also convenient access from the garden directly into the garage.

This outstanding home offers stylish, high-specification living in one of Burton Latimer's most sought-after developments and must be viewed to be fully appreciated.

...expect excellence



SELLER'S SECRET



Why we like it....

OSCAR JAMES

45 High Street | Burton Latimer | NN15 5LB
01536 722 222
www.oscar-james.com

To buy or not to buy....
